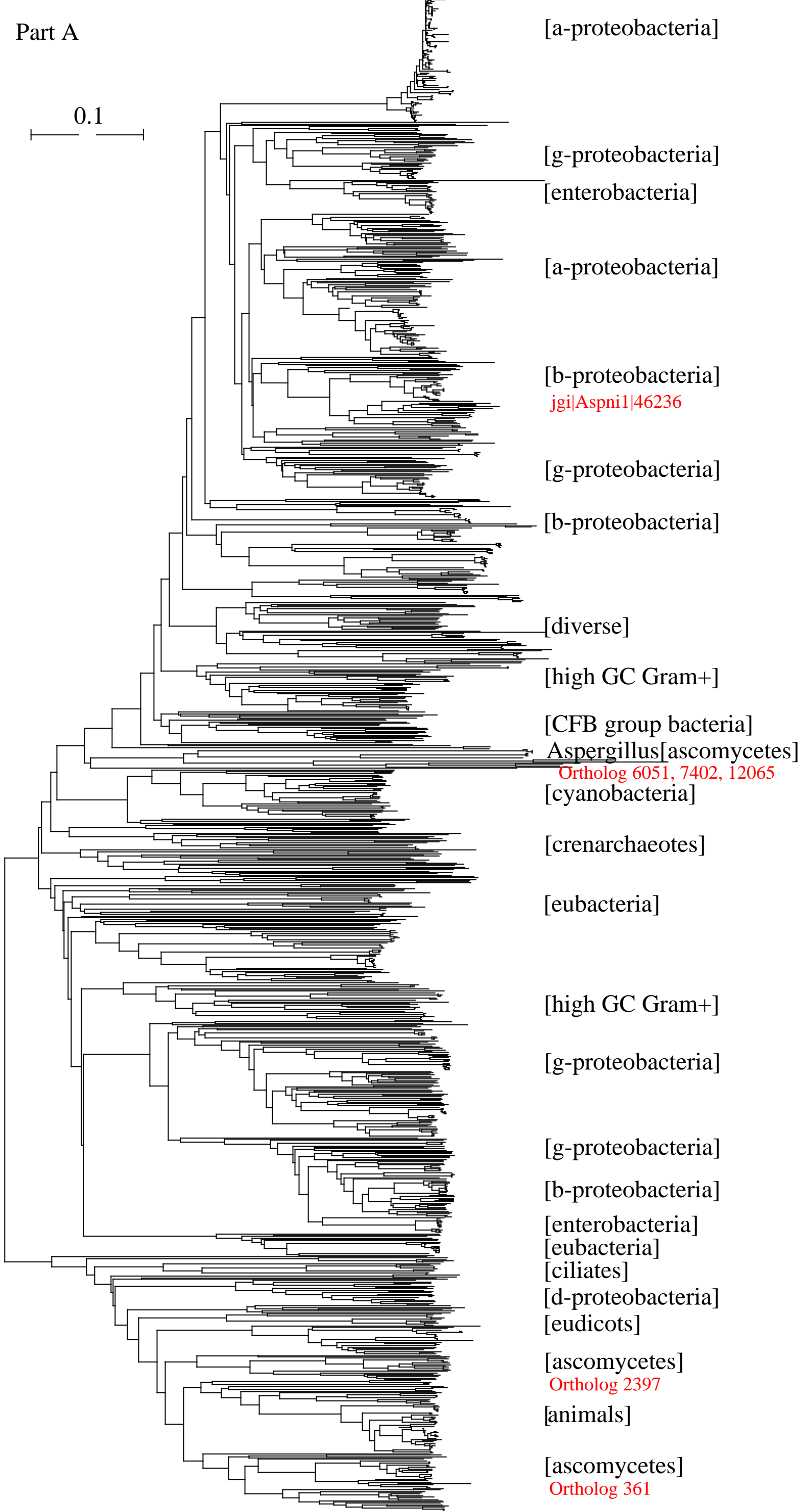
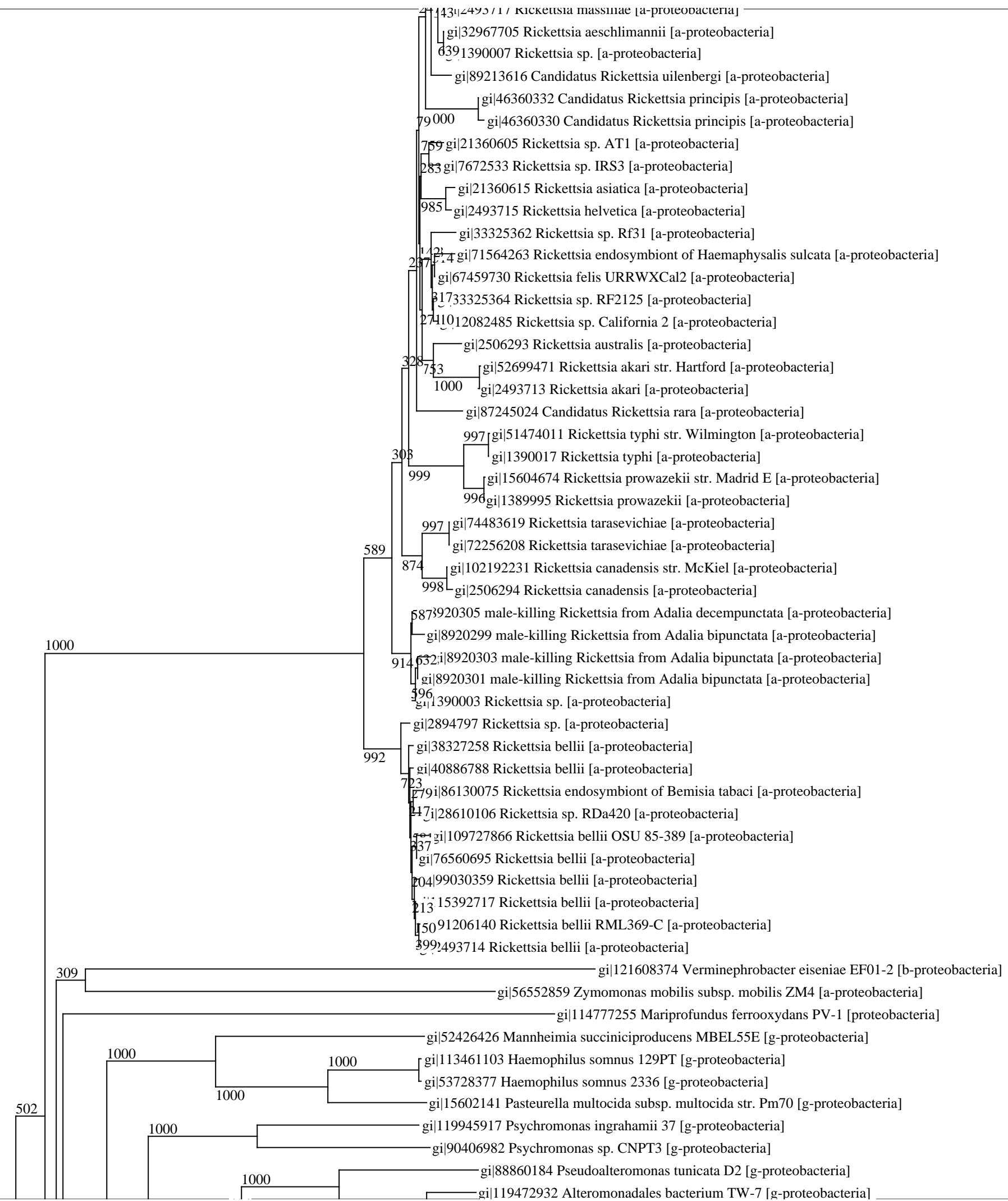
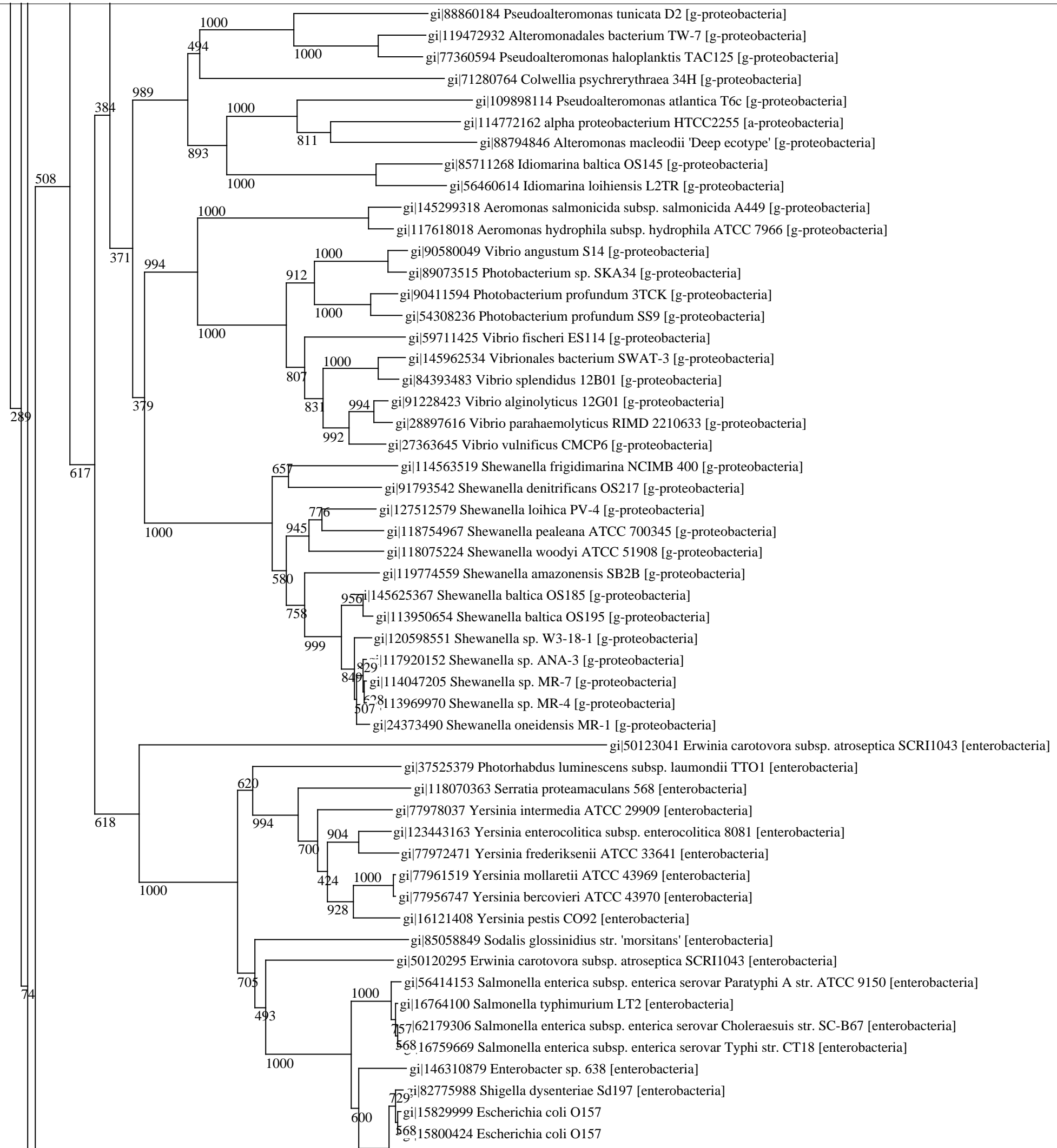


Part A

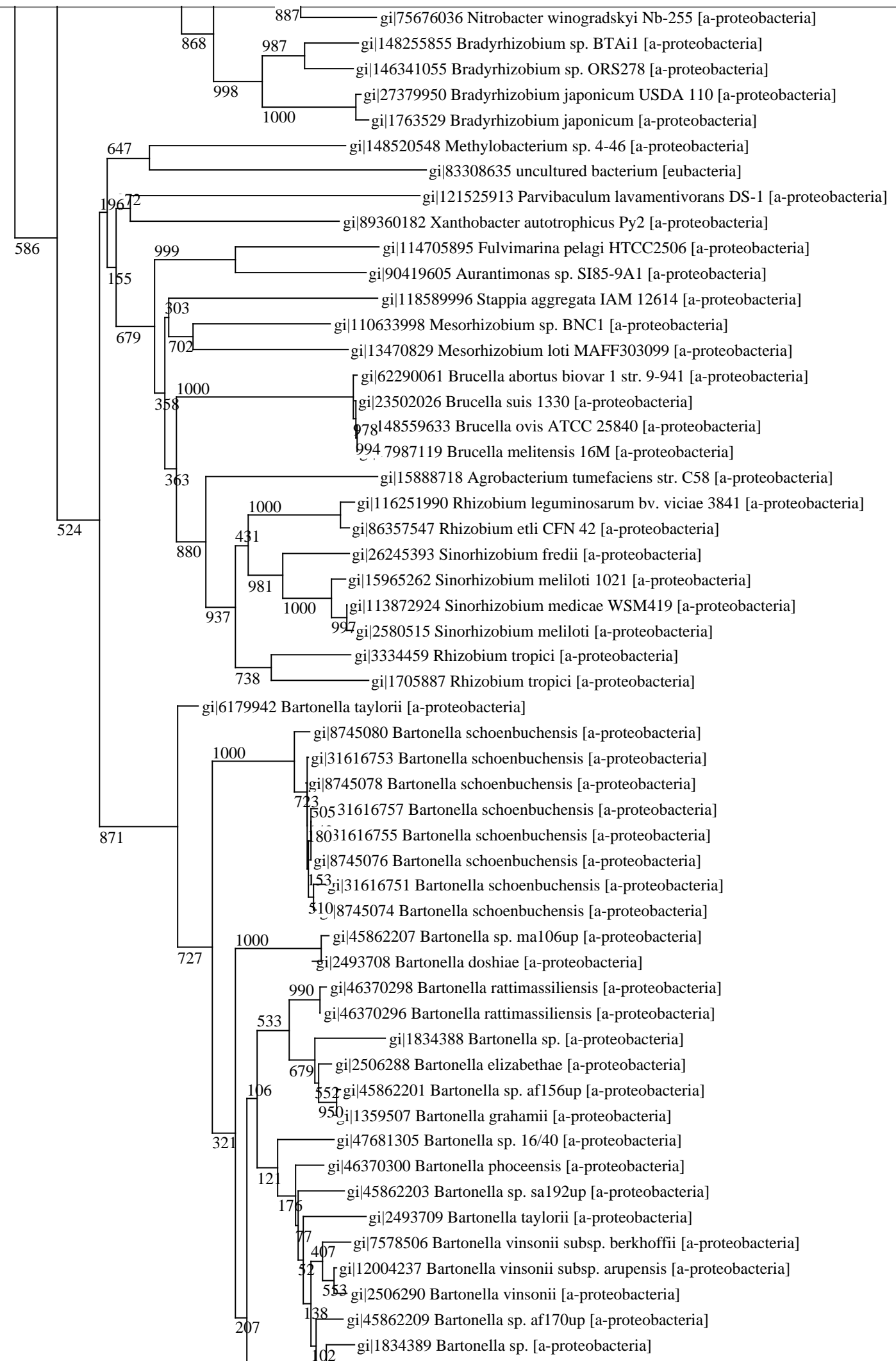


A vertical dendrogram showing the phylogenetic relationships between various Rickettsia species. The tree is rooted at the top and branches downwards. A scale bar at the top right indicates a distance of 0.1. The species names are listed on the right side of the tree, with their corresponding GenBank accession numbers (gi|...) on the left side. The species are: gi|1390011 Rickettsia sp. [a-proteobacteria], gi|89213620 Candidatus Rickettsia davousti [a-proteobacteria], gi|31323702 Rickettsia sp. Chad [a-proteobacteria], gi|2493712 Rickettsia africae [a-proteobacteria], gi|2493707 Rickettsia sp. A-167 [a-proteobacteria], gi|1390015 Rickettsia sp. [a-proteobacteria], gi|73695889 Rickettsia peacockii [a-proteobacteria], gi|6531674 Rickettsia sp. DaE100R [a-proteobacteria], gi|73622936 Rickettsia rickettsii [a-proteobacteria], gi|73622932 Rickettsia rickettsii [a-proteobacteria], gi|3783622920 Rickettsia rickettsii [a-proteobacteria], gi|72139276 Rickettsia rickettsii [a-proteobacteria], gi|53732417 Rickettsia rickettsii [a-proteobacteria], gi|1390001 Rickettsia rickettsii [a-proteobacteria], gi|34581101 Rickettsia sibirica 246 [a-proteobacteria], gi|15893231 Rickettsia conorii str. Malish 7 [a-proteobacteria], gi|1389987 Rickettsia conorii [a-proteobacteria], gi|2493718 Rickettsia parkeri [a-proteobacteria], gi|33438753 Rickettsia heilongjiangii [a-proteobacteria], gi|9622362 Rickettsia hulunii [a-proteobacteria], gi|30843330 Rickettsia heilongjiangensis [a-proteobacteria], gi|2967732 Rickettsia heilongjiangensis [a-proteobacteria], gi|21360607 Rickettsia sp. DT1 [a-proteobacteria], gi|2493716 Rickettsia japonica [a-proteobacteria], gi|40886790 Rickettsia sp. COOPERI [a-proteobacteria], gi|18723470 Rickettsia parkeri [a-proteobacteria], gi|12002877 Rickettsia sp. BJ-90 [a-proteobacteria], gi|2564659 Rickettsia honei [a-proteobacteria], gi|52694877 Rickettsia marmionii [a-proteobacteria], gi|1390019 Rickettsia honei [a-proteobacteria], gi|73620147 Rickettsia mongolotimonae [a-proteobacteria], gi|71480637 Rickettsia sibirica [a-proteobacteria], gi|80975523 Candidatus Rickettsia gravesii [a-proteobacteria], gi|74275555 Rickettsia slovacica [a-proteobacteria], gi|71738260 Rickettsia sibirica [a-proteobacteria], gi|21769551 Israeli tick typhus rickettsia [a-proteobacteria], gi|118084613 Israeli tick typhus rickettsia [a-proteobacteria], gi|1389975 Israeli tick typhus rickettsia [a-proteobacteria], gi|99030363 Rickettsia amblyommii [a-proteobacteria], gi|38327262 Rickettsia amblyommii [a-proteobacteria], gi|4104084 Rickettsia sp. [a-proteobacteria], gi|87115967 Candidatus Rickettsia antechini [a-proteobacteria], gi|1658283 Rickettsia montanensis [a-proteobacteria], gi|28610108 Rickettsia sp. RDla440 [a-proteobacteria], gi|87245020 Rickettsia raoultii [a-proteobacteria], gi|6979197 Rickettsia sp. DnS14 [a-proteobacteria], gi|6979195 Rickettsia sp. DnS28 [a-proteobacteria], gi|87245026 Candidatus Rickettsia kulagini [a-proteobacteria], gi|15392721 Rickettsia rhipicephali [a-proteobacteria], gi|44970395 Rickettsia sp. R300 [a-proteobacteria], gi|2493717 Rickettsia massiliae [a-proteobacteria], gi|32967705 Rickettsia aeschlimannii [a-proteobacteria].









172

11

586

524

871

727

321

207

102

102

102

102

102

102

102

102

102

102

102

102

102

102

102

102

102

102

102

102

102

102

102

102

102

102

102

102

102

102

102

102

102

102

102

102

102

102

102

102

102

102

102

102

102

102

102

102

102

102

102

102

102

102

102

102

102

102

102

102

102

102

102

102

102

102

102

102

102

102

102

102

102

102

102

102

102

102

102

102

102

102

102

102

102

102

102

102

102

102

102

102

102

102

102

102

102

102

102

102

102

102

102

102

102

102

102

102

102

102

102

102

102

102

102

102

102

102

102

102

102

102

102

102

102

102

102

102

102

102

102

102

102

102

102

102

102

102

102

102

102

102

102

102

102

102

102

102

102

102

102

102

102

102

102

102

102

102

102

102

102

102

102

102

102

102

102

102

102

102

102

102

102

102

102

102

102

102

102

102

102

102

102

102

102

102

102

102

102

102

102

102

102

102

102

102

102

102

102

102

102

102

102

102

102

102

102

102

102

102

102

102

102

102

102

102

102

102

102

102

102

102

102

102

102

102

102

102

102

102

102

102

102

102

102

102

102

102

102

102

102

102

102

102

102

102

102

102

102

102

102

102

102

102

102

102

102

102

102

102

102

102

102

102

102

102

102

102

102

102

102

102

102

102

102

102

102

102

102

102

102

102

102

102

102

102

102

102

102

102

102

102

102

102

102

102

102

102

102

102

102

102

102

102

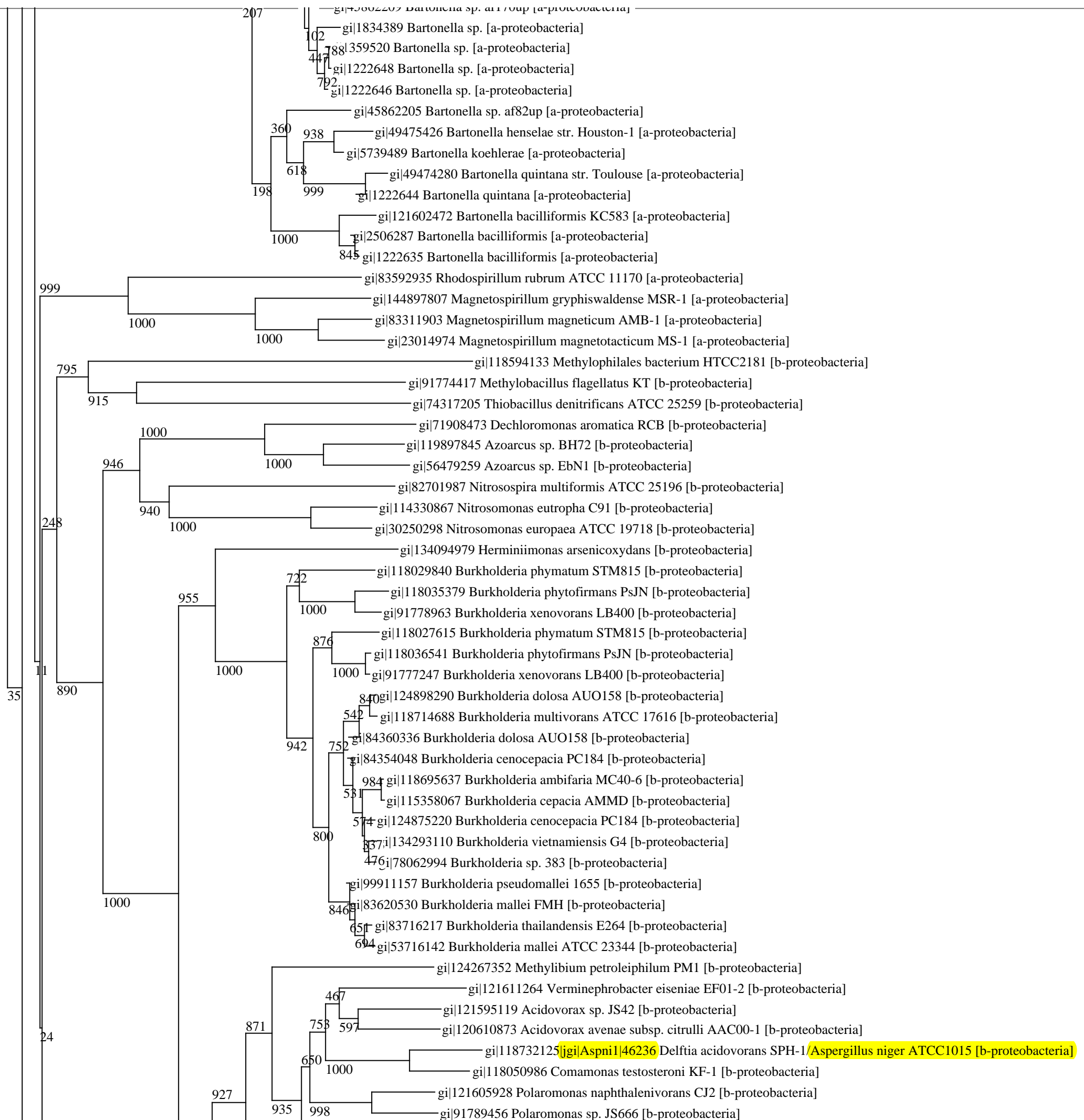
102

102

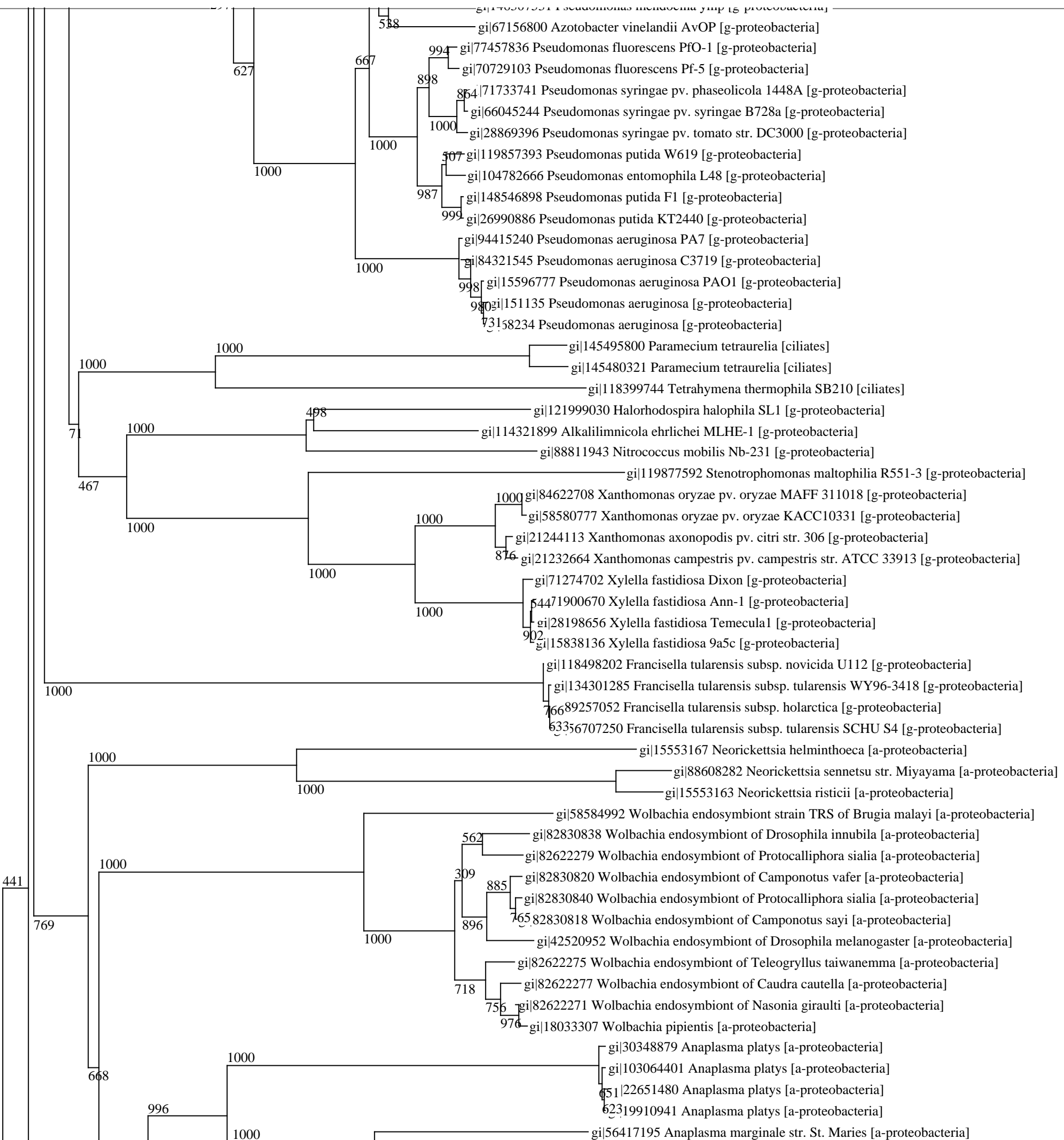
102

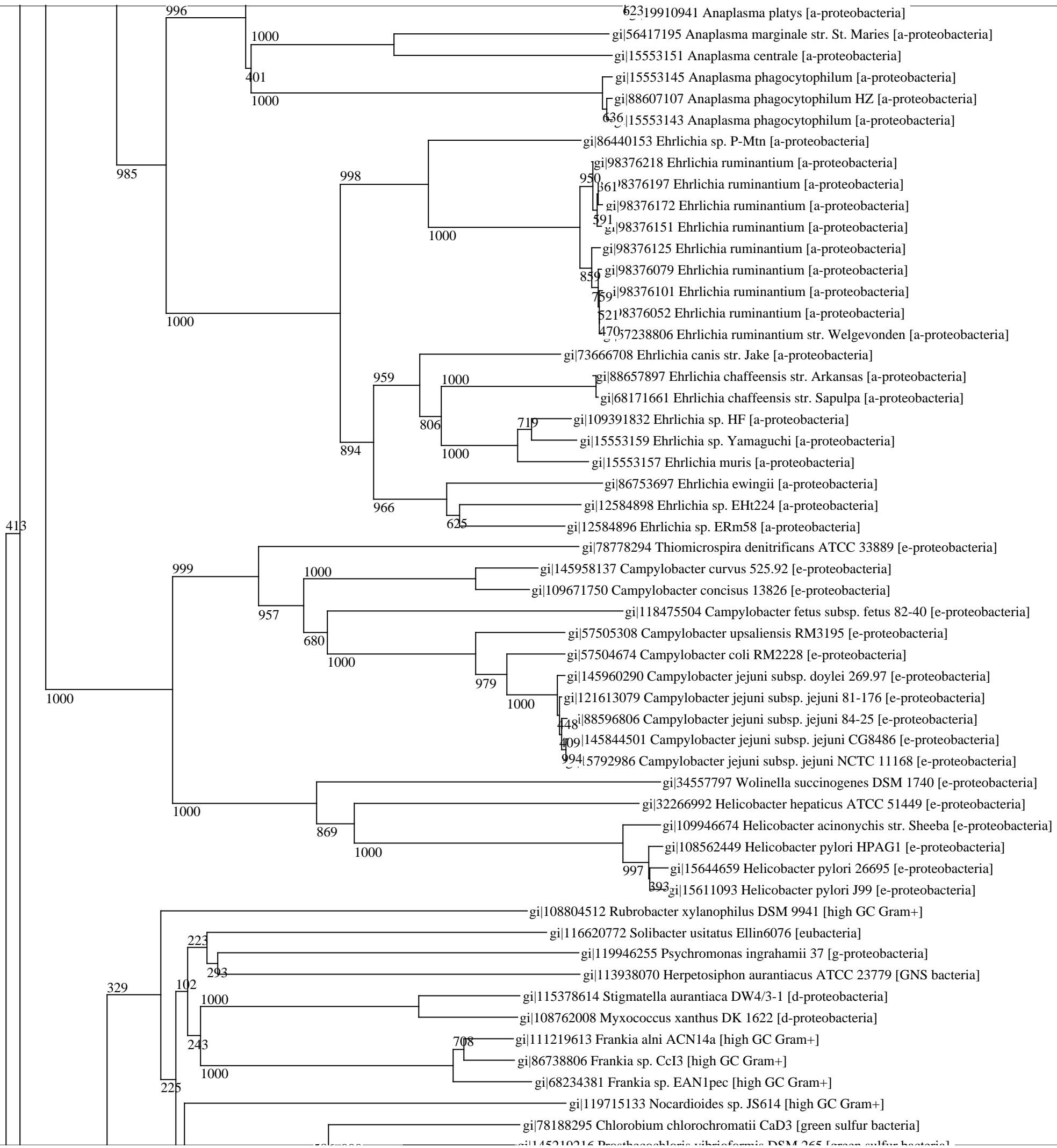
102

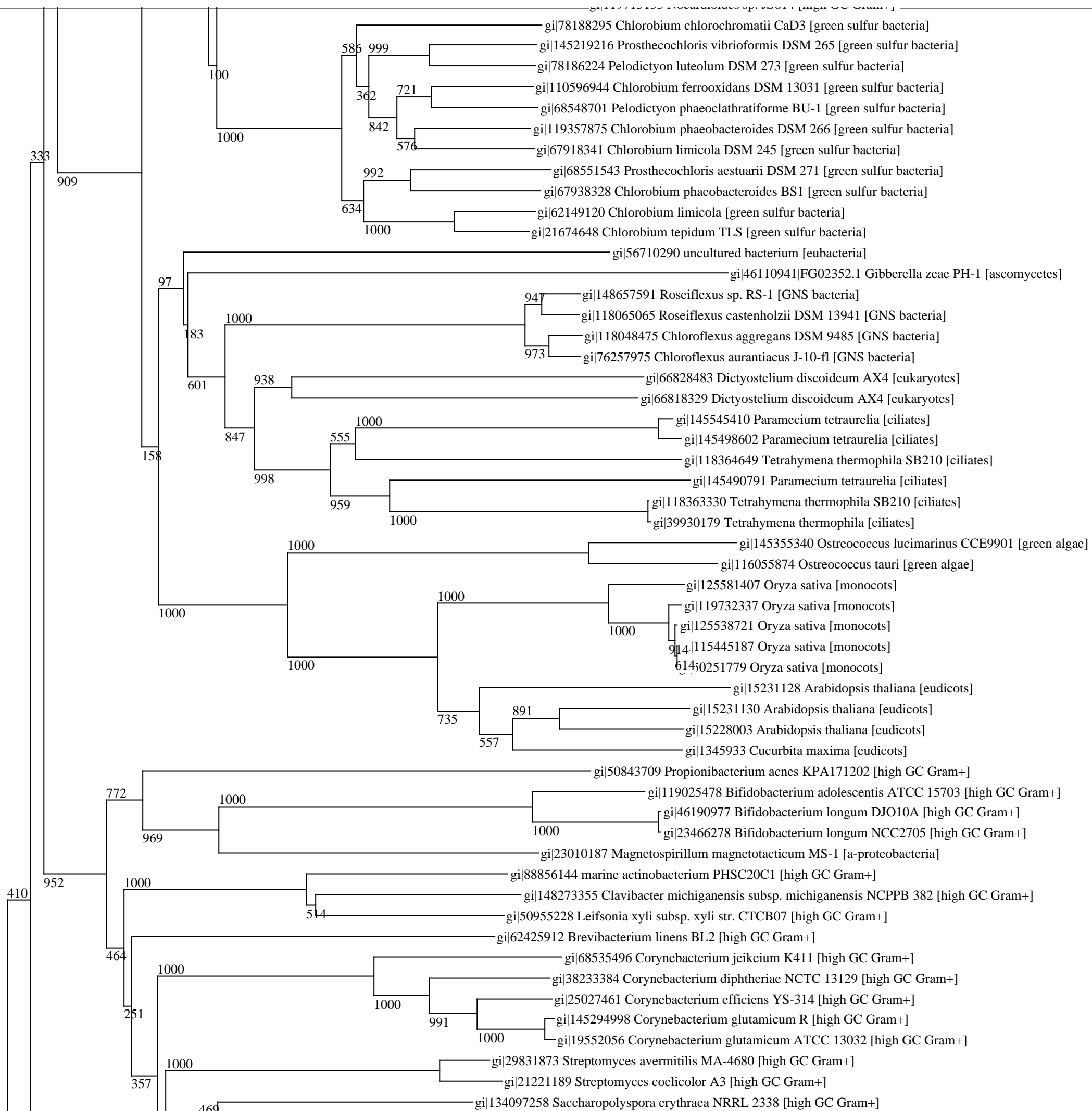
102

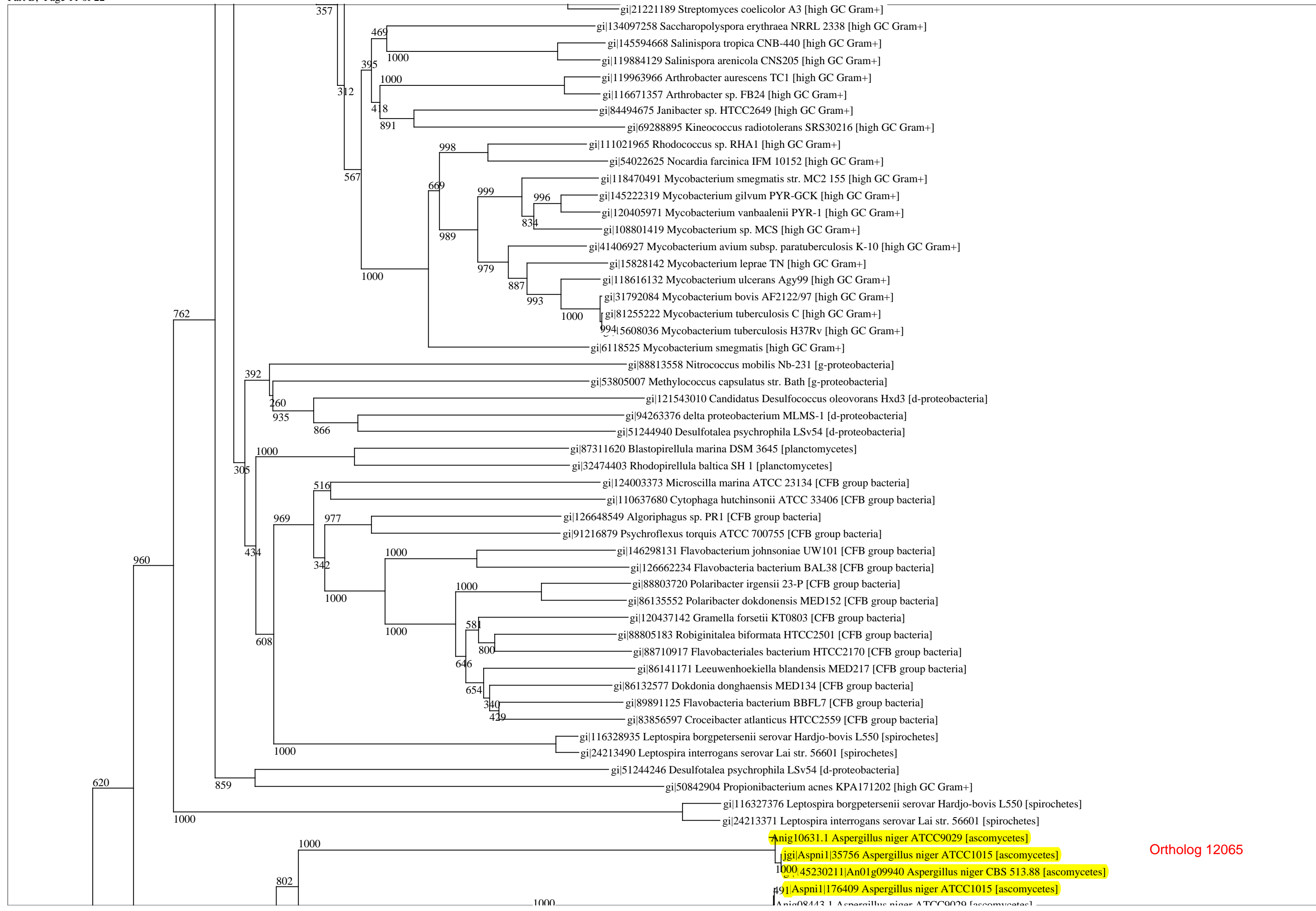




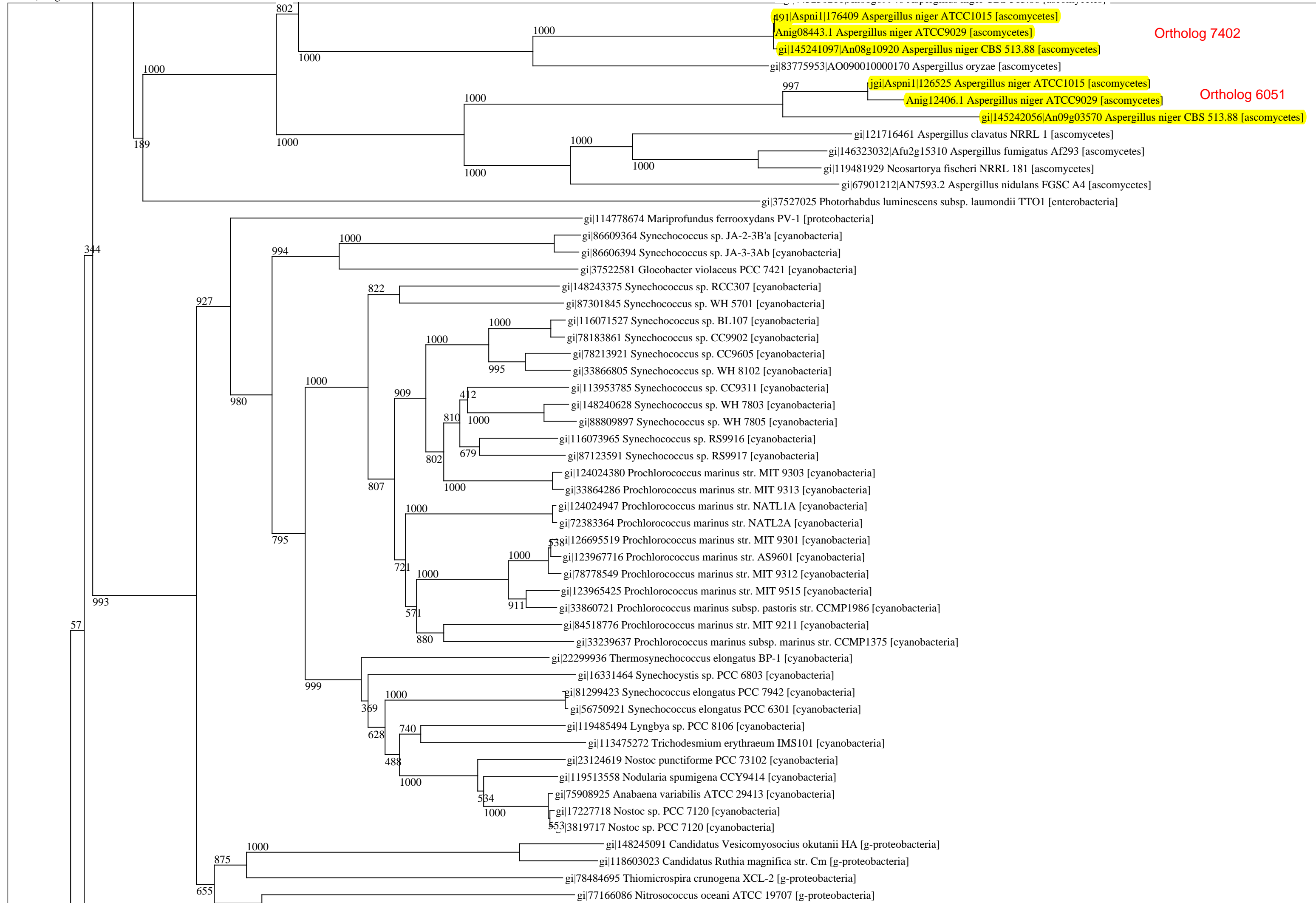


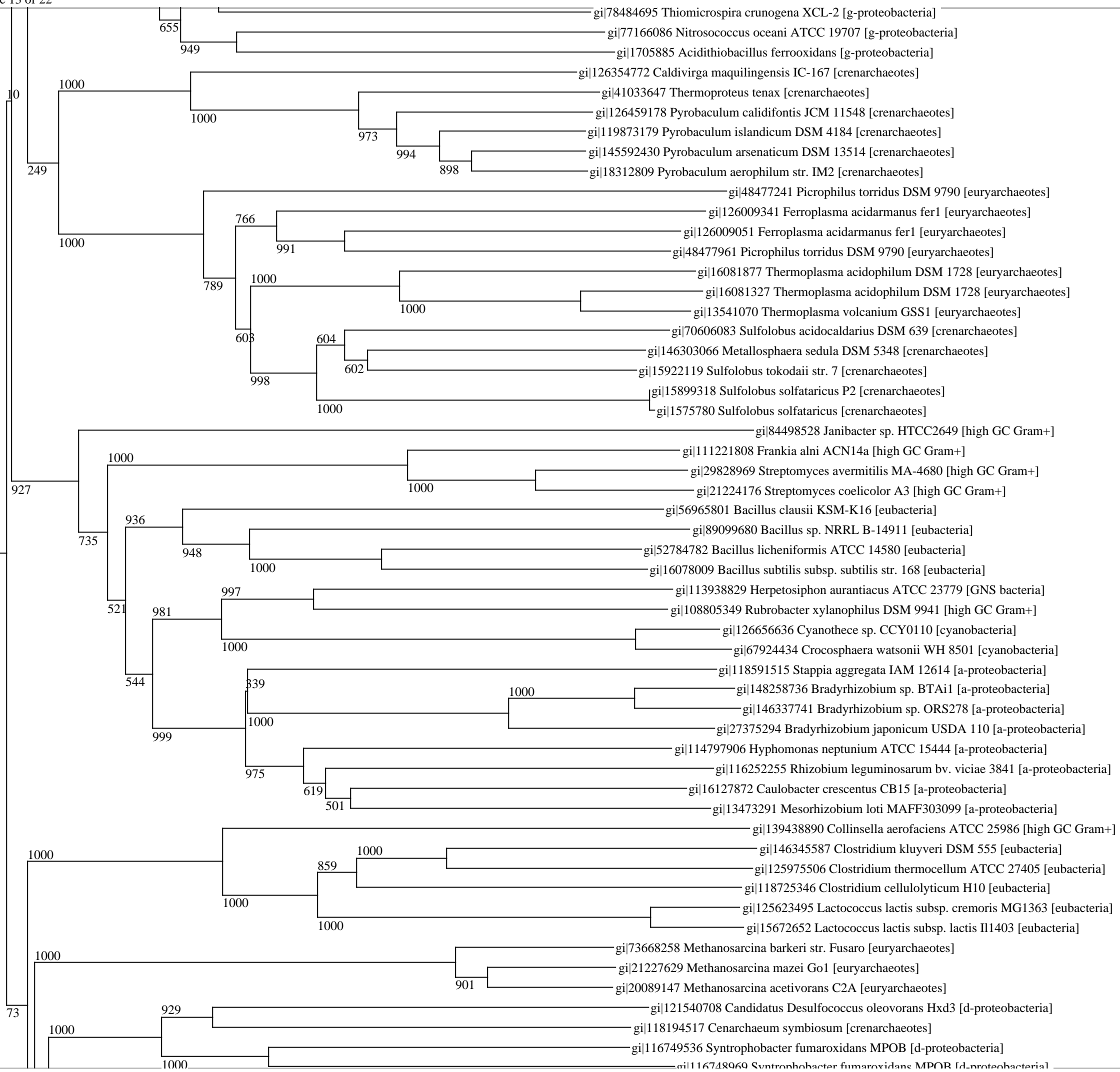


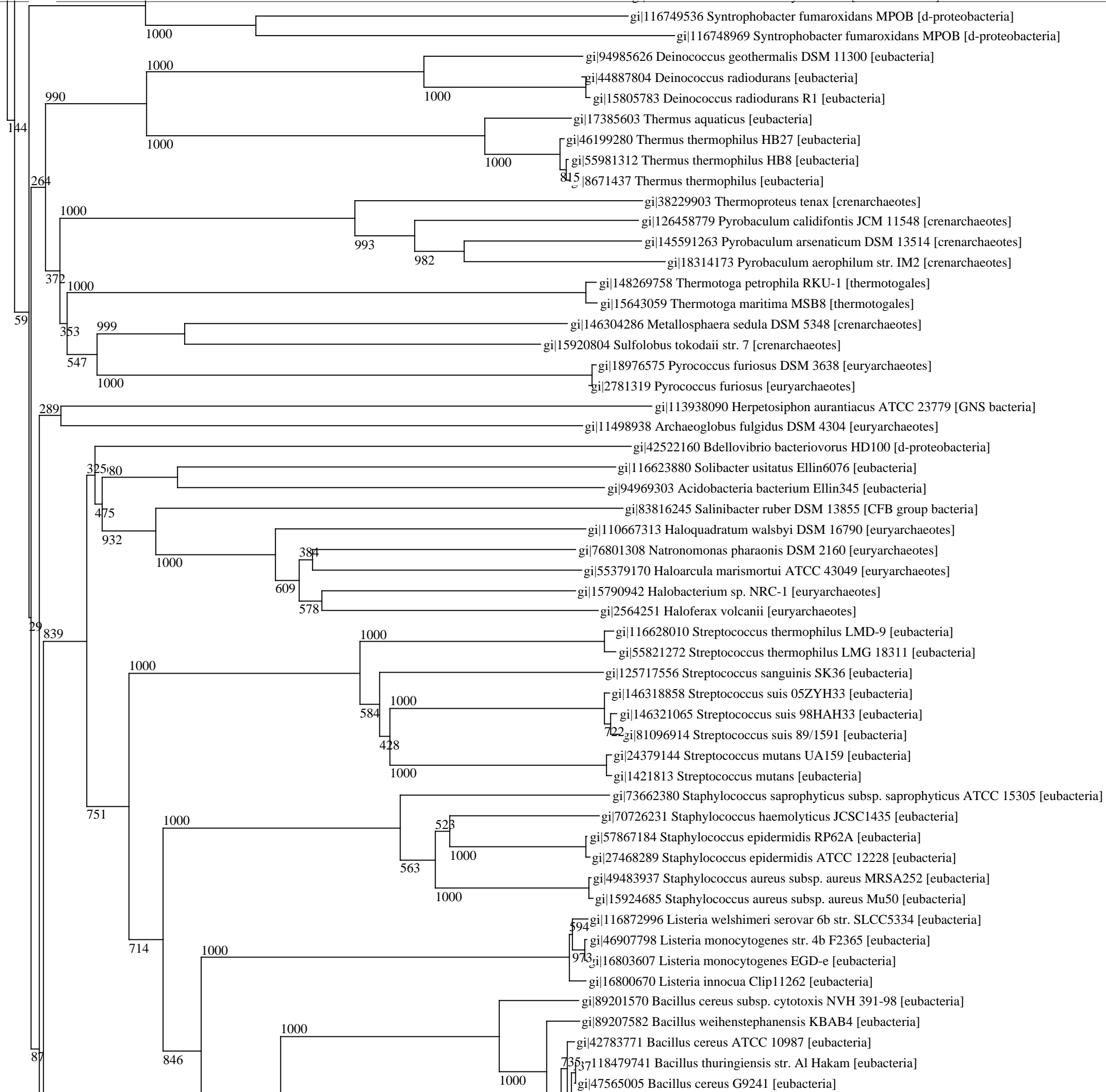


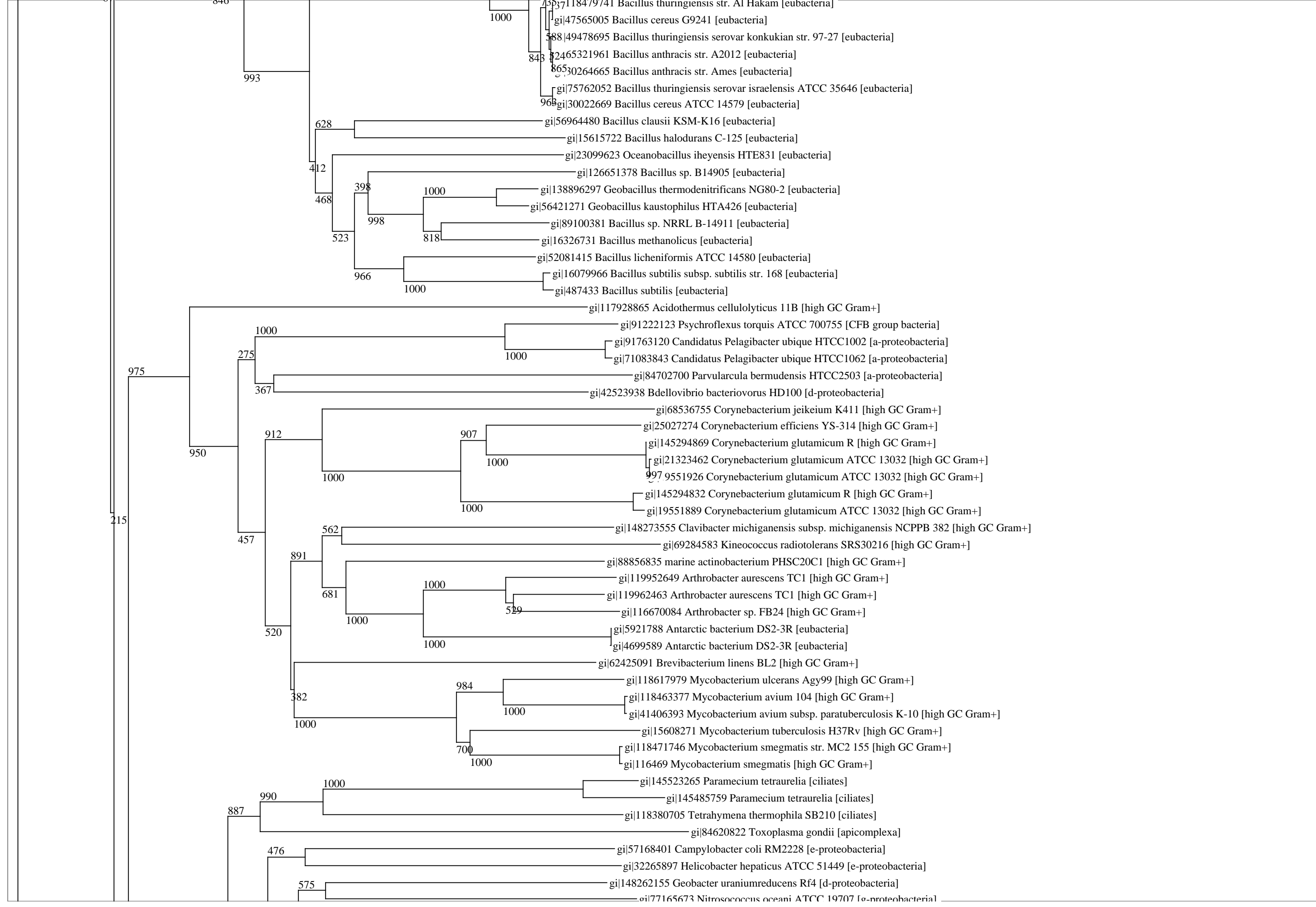


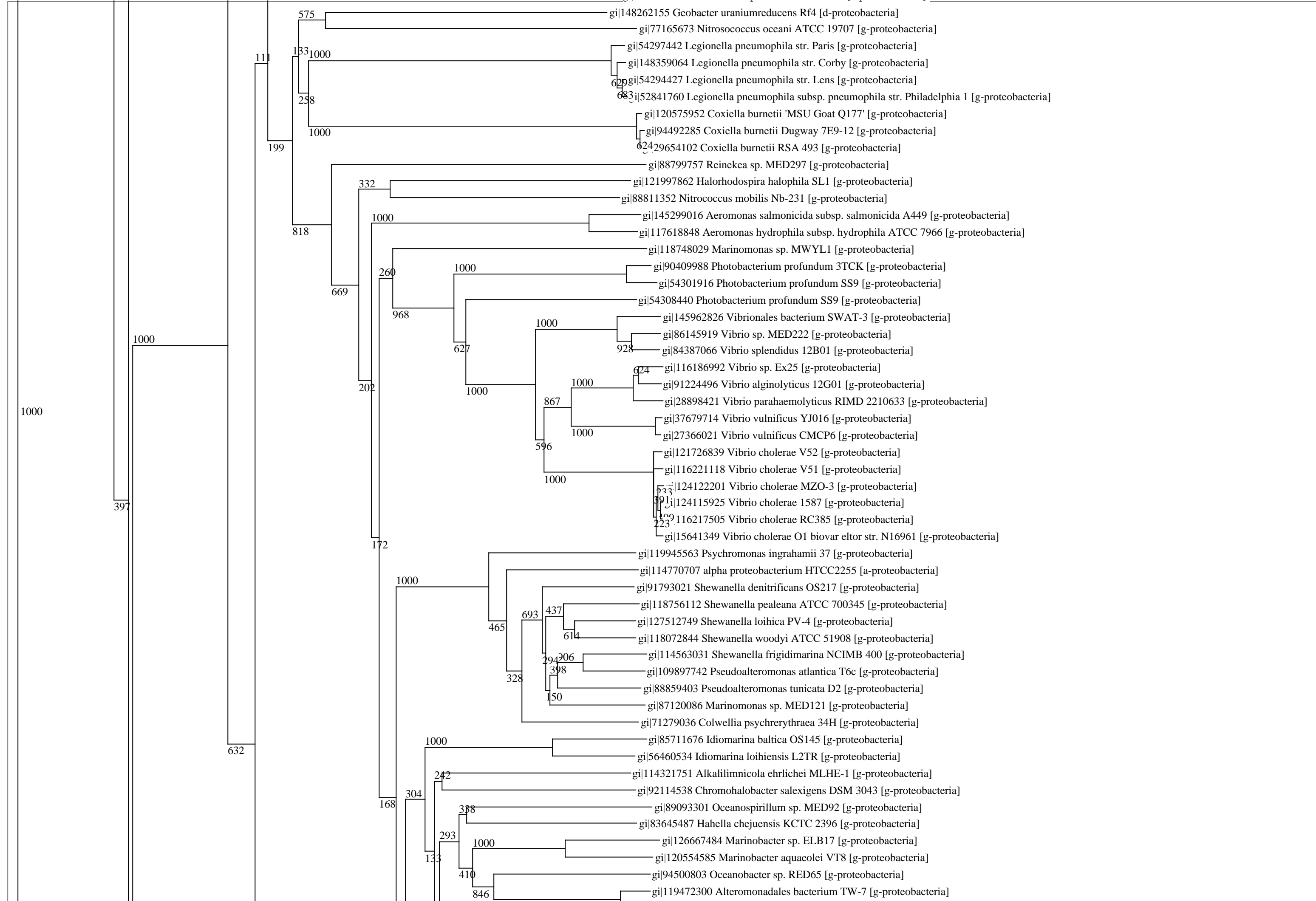
Ortholog 12065

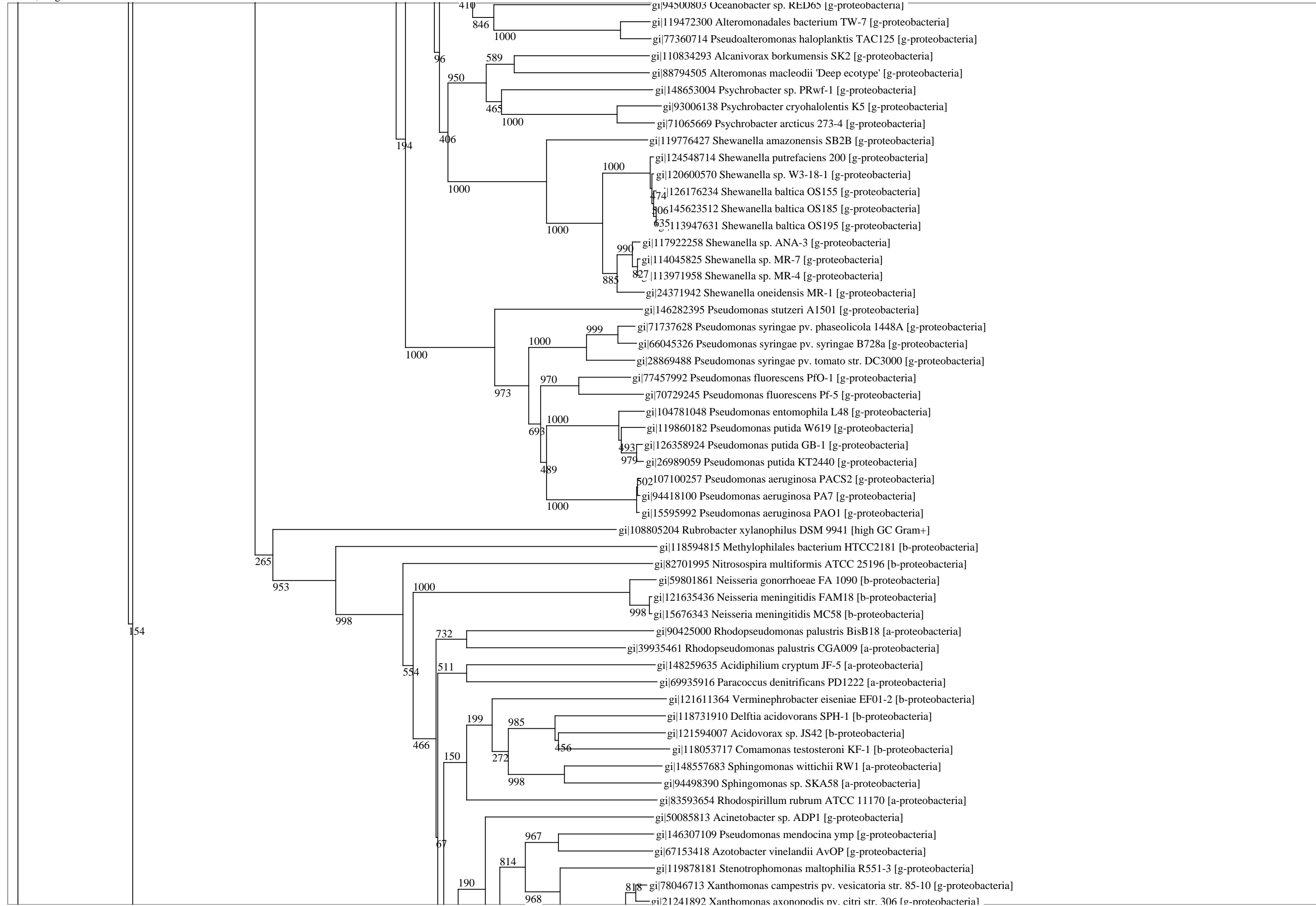


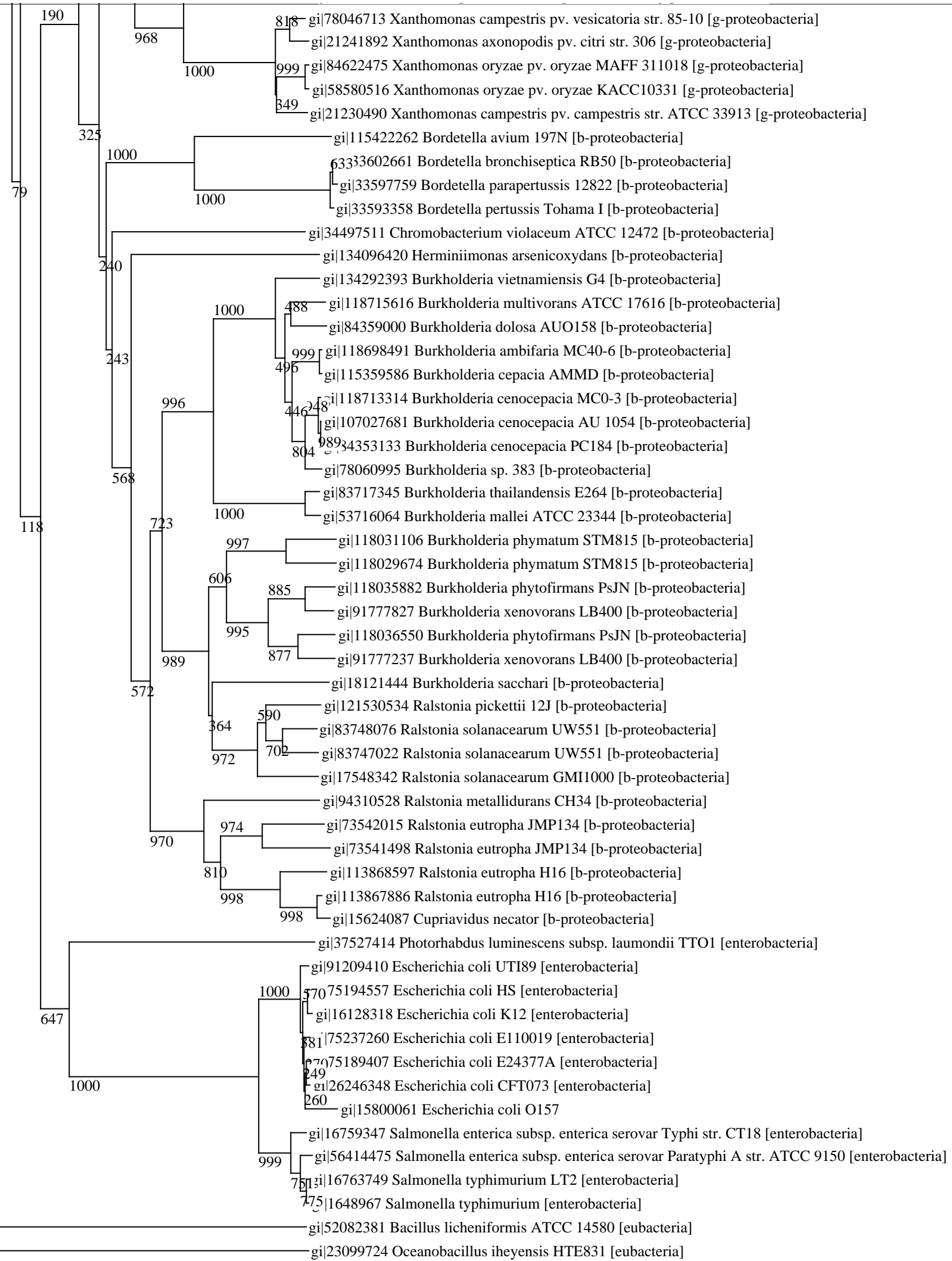


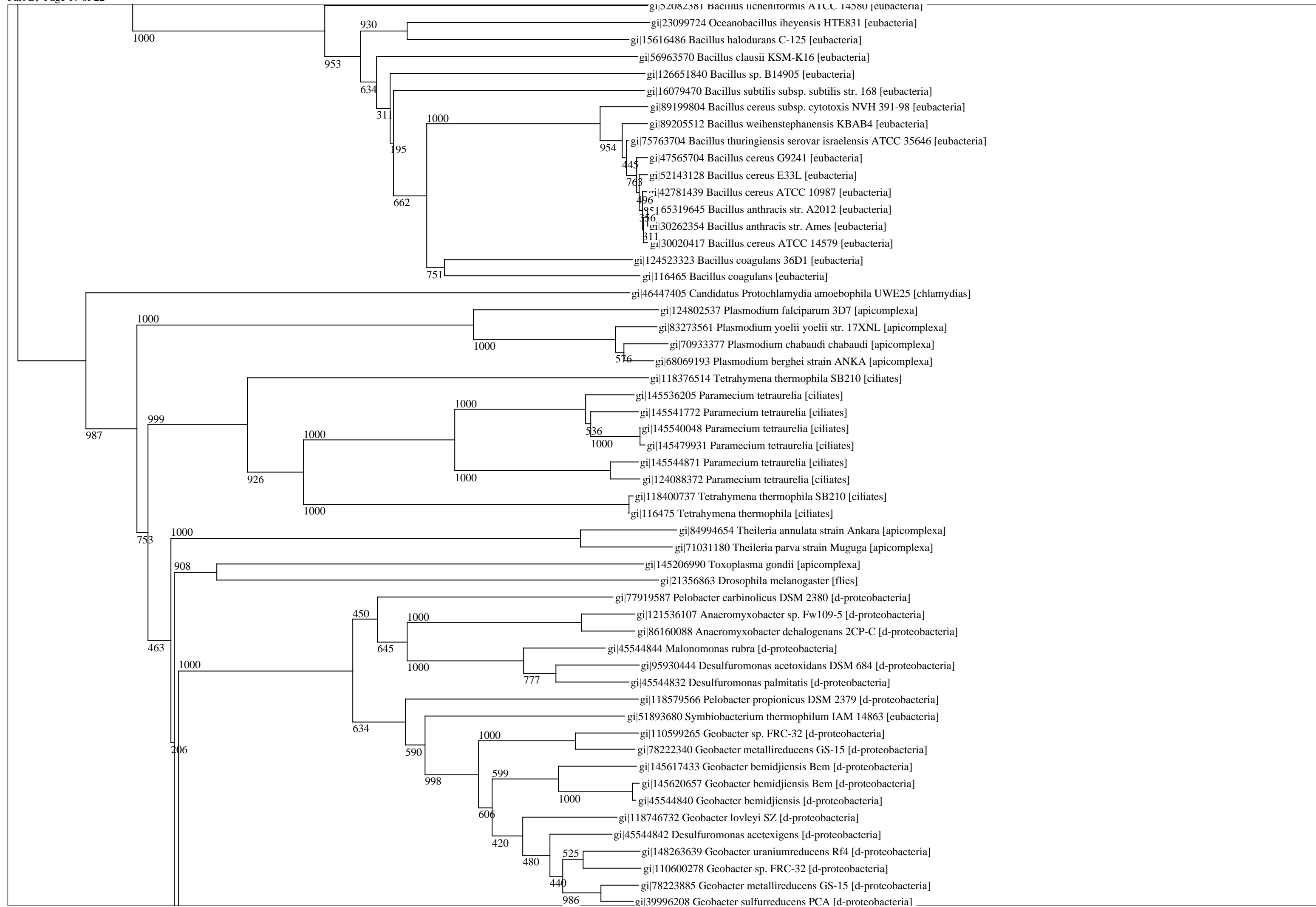




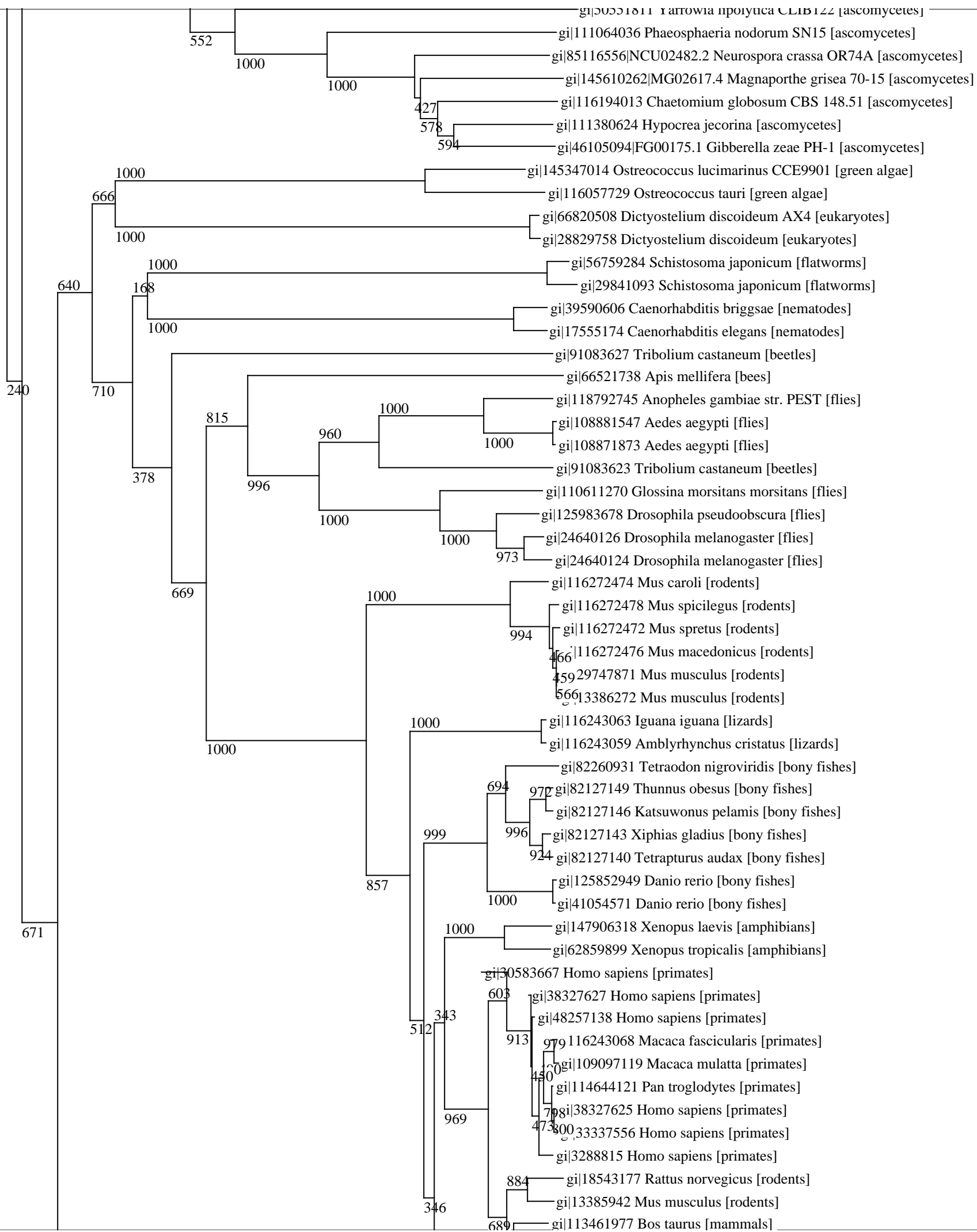


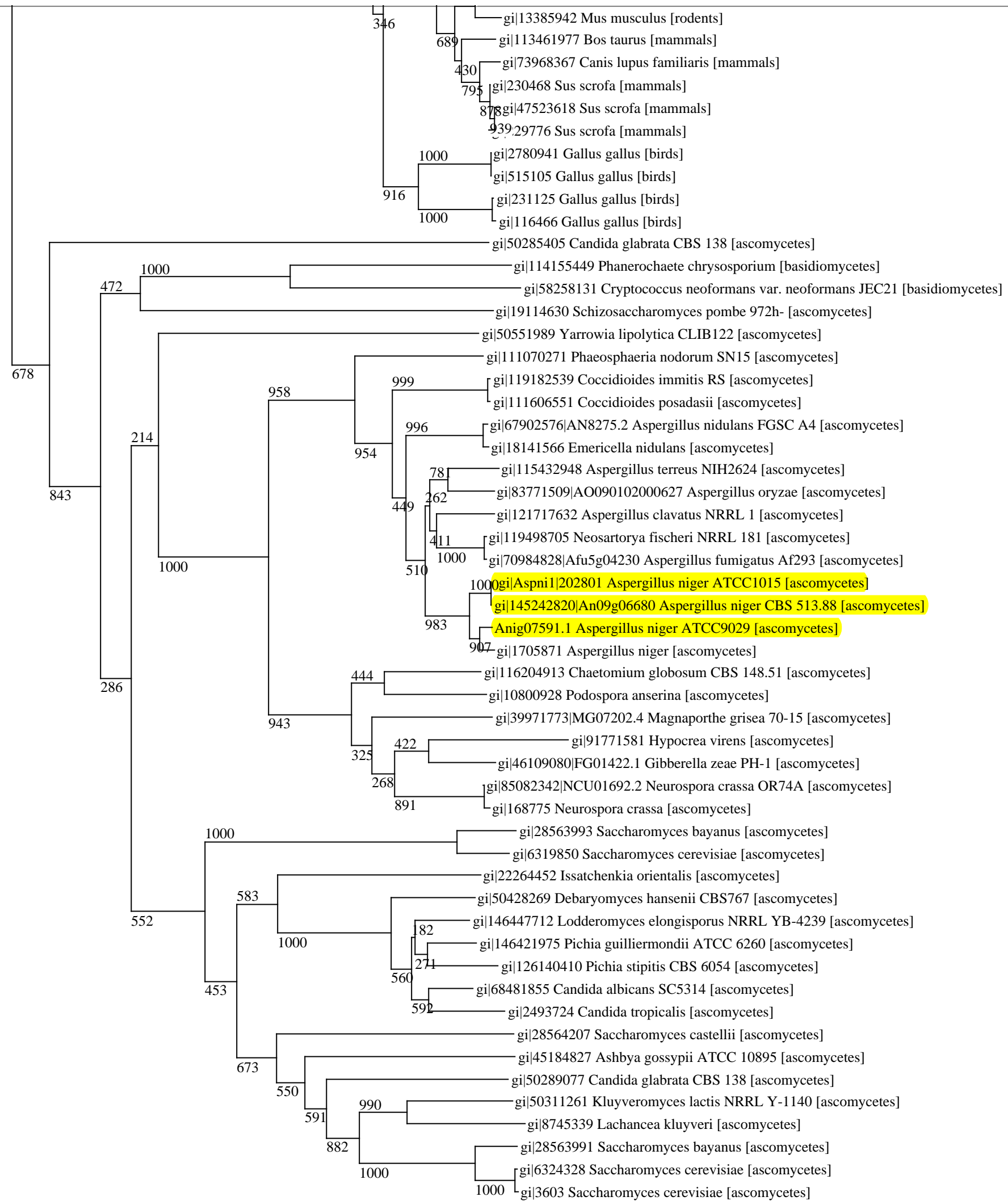












Ortholog 361