

**Figure S1** Distribution of  $d$  for each codon in yeast. The value of  $d$  is demonstrated on the horizontal axis, whereas the vertical axis shows the density. Black bars represent distribution of  $d$  in positive gold standard set and red bars stand for the distribution of  $d$  in negative gold standard set.

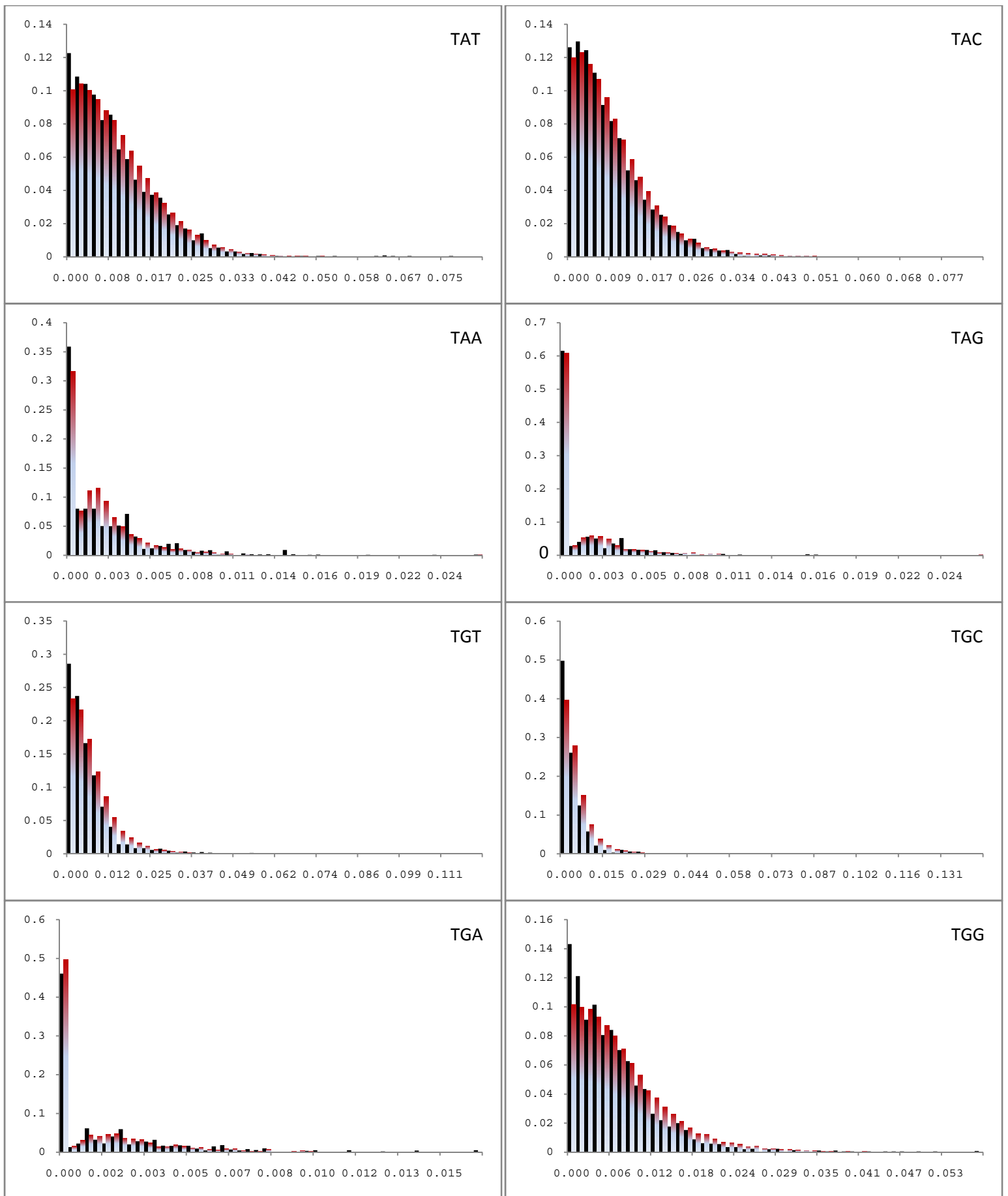


Figure S1 Continued.

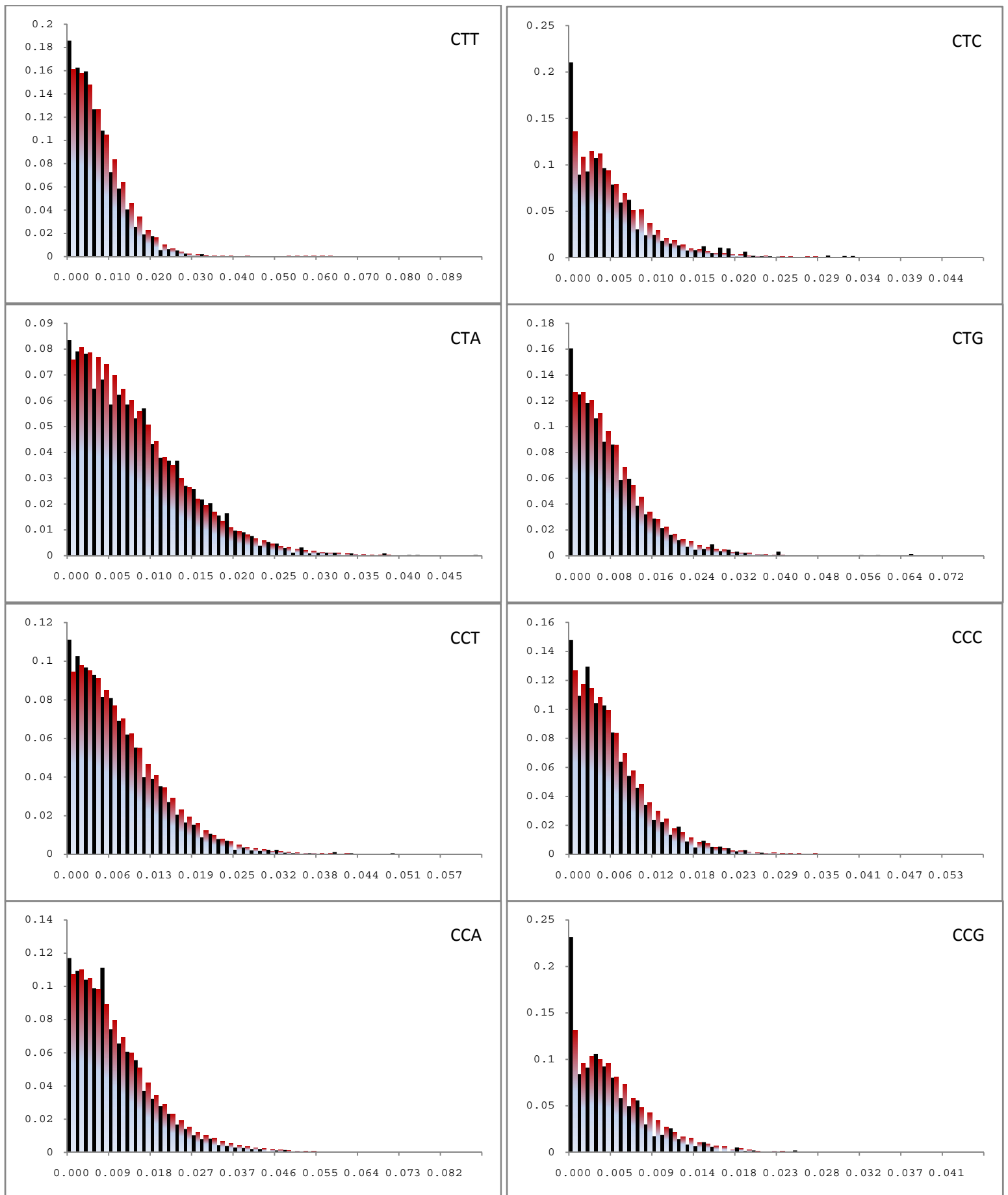


Figure S1 Continued

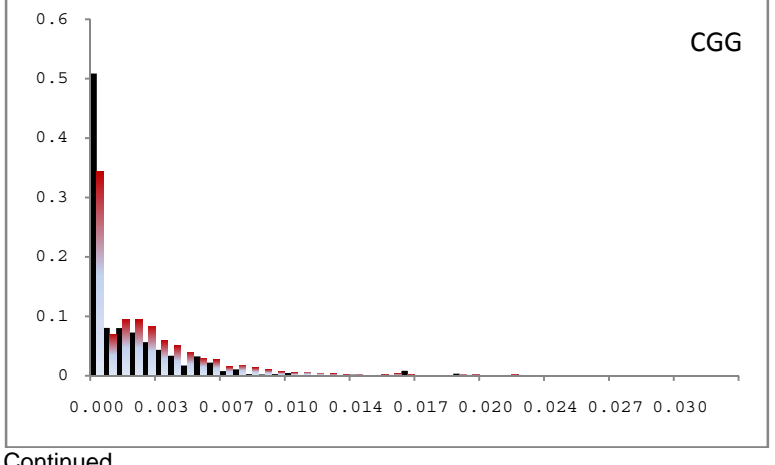
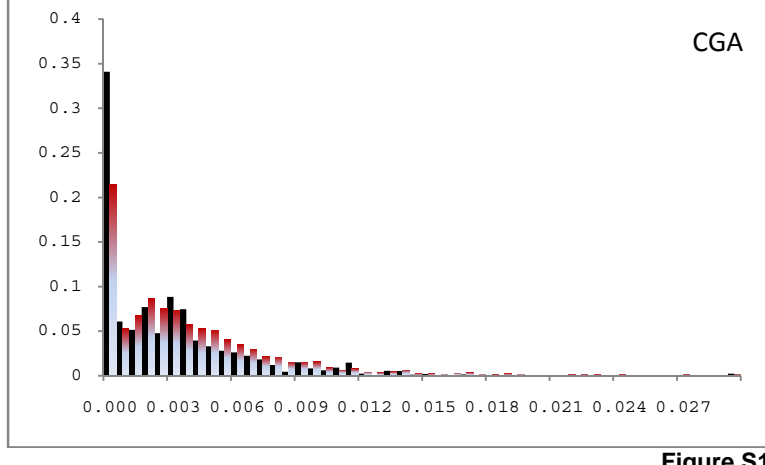
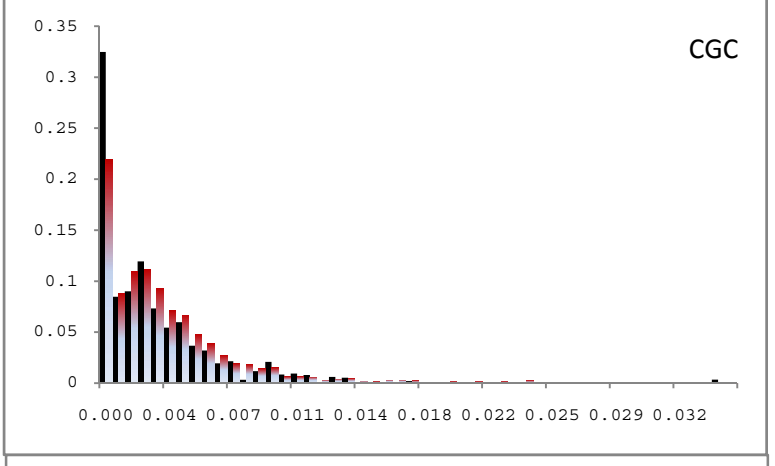
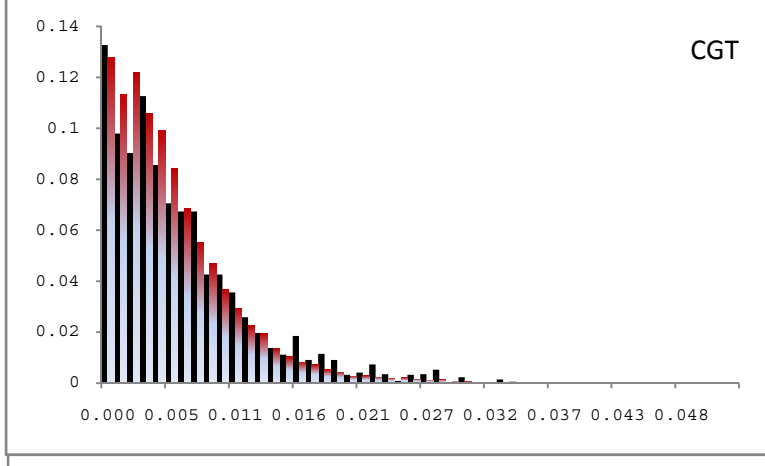
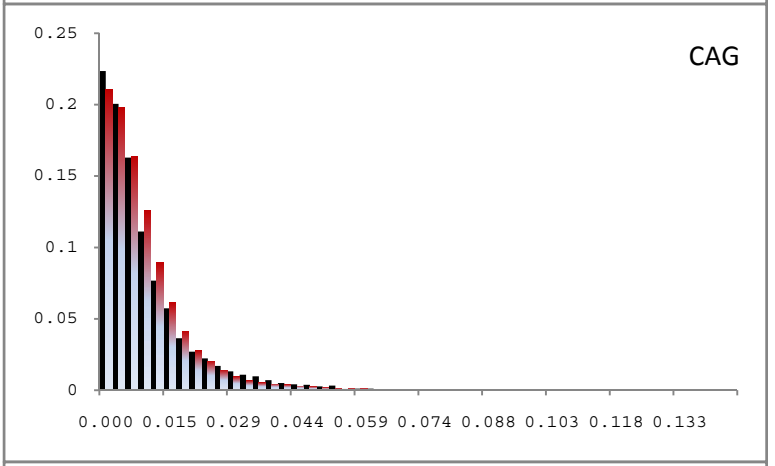
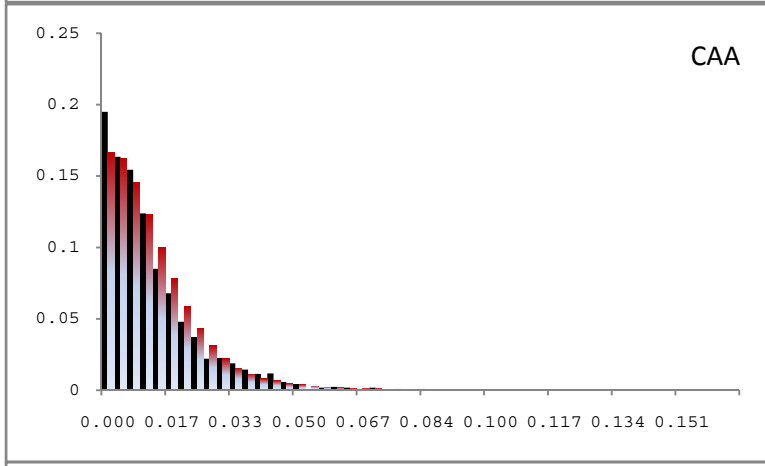
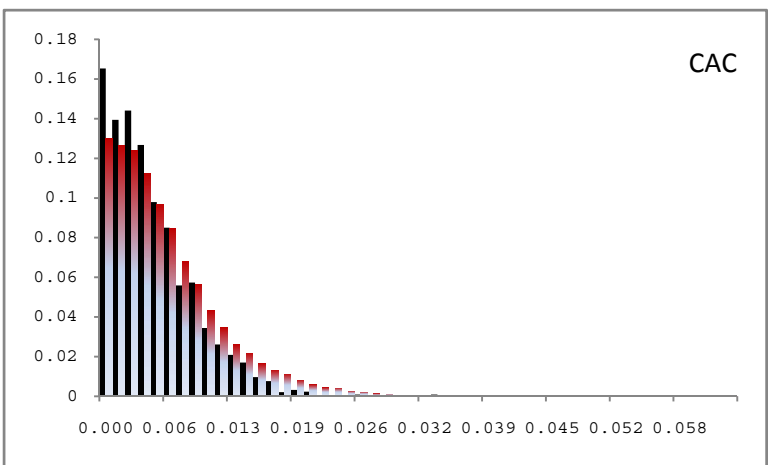
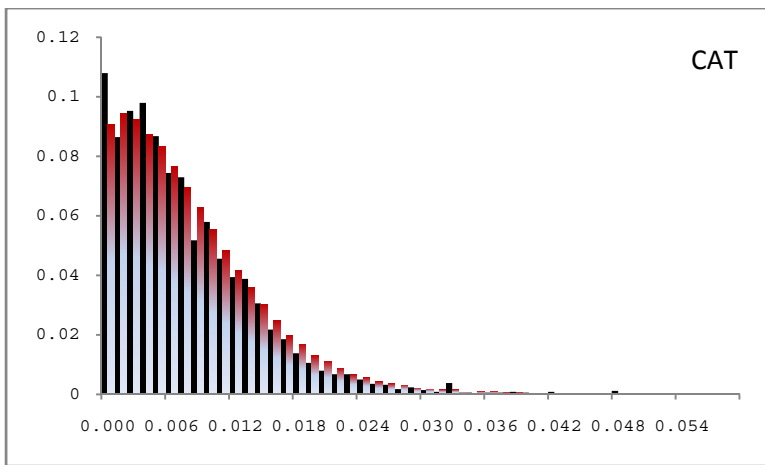


Figure S1 Continued

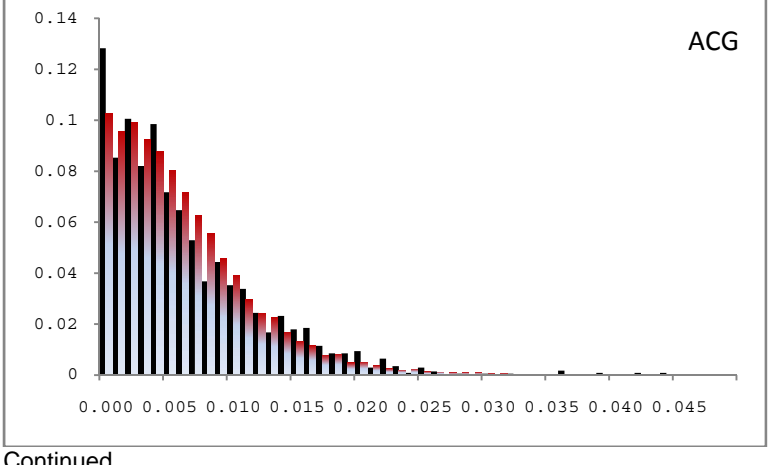
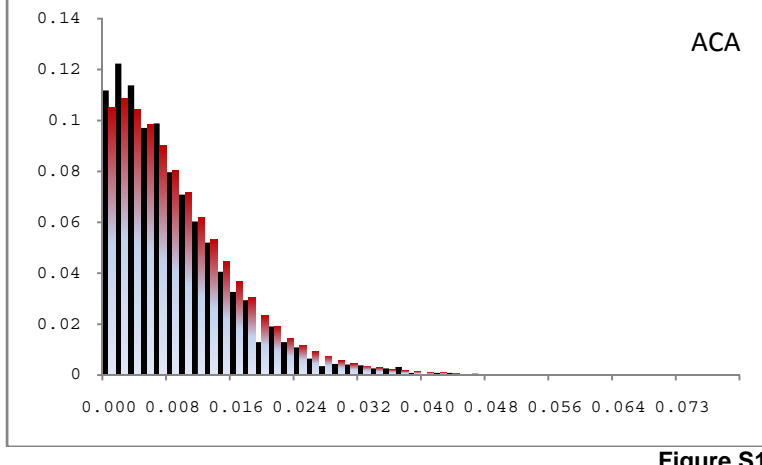
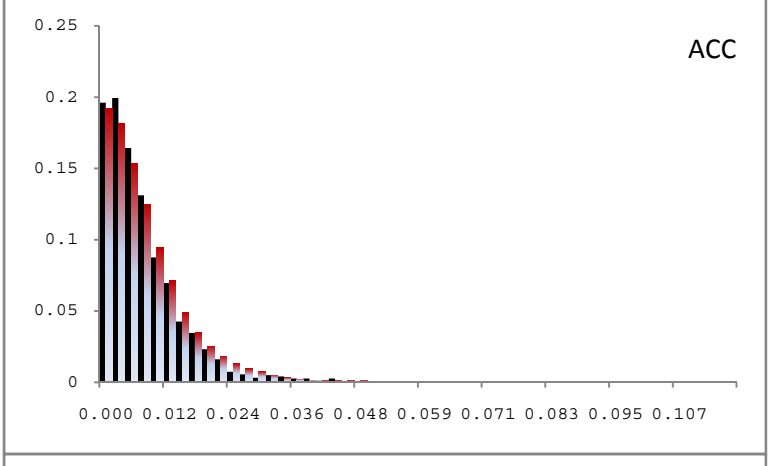
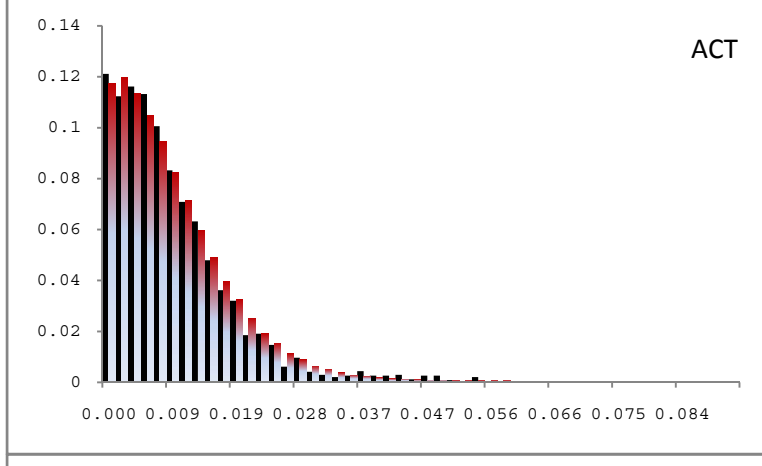
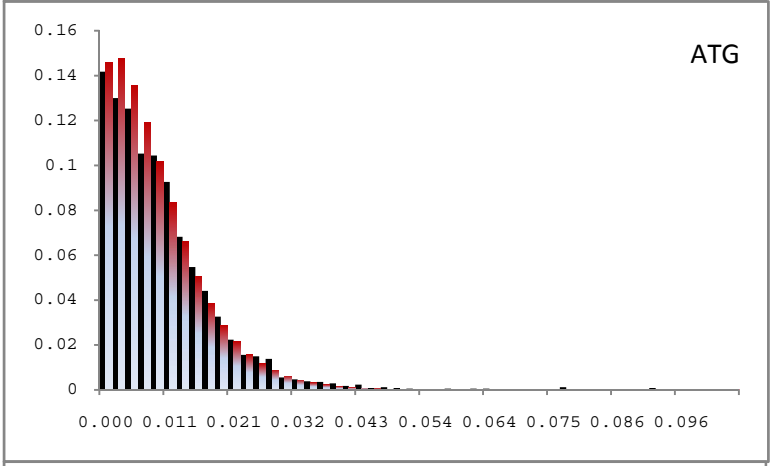
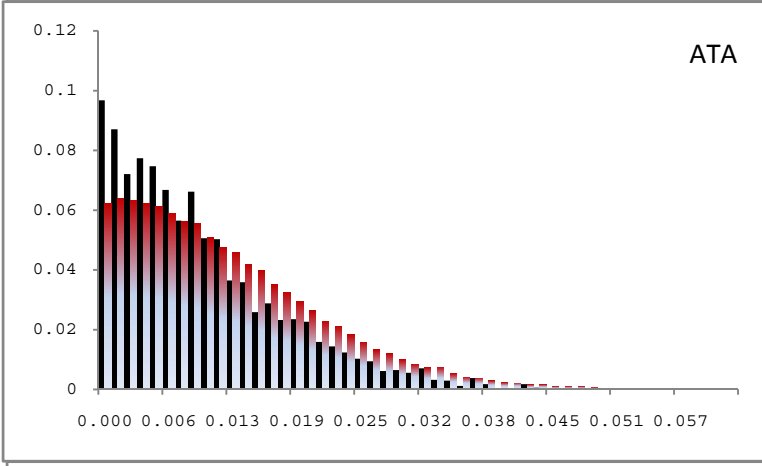
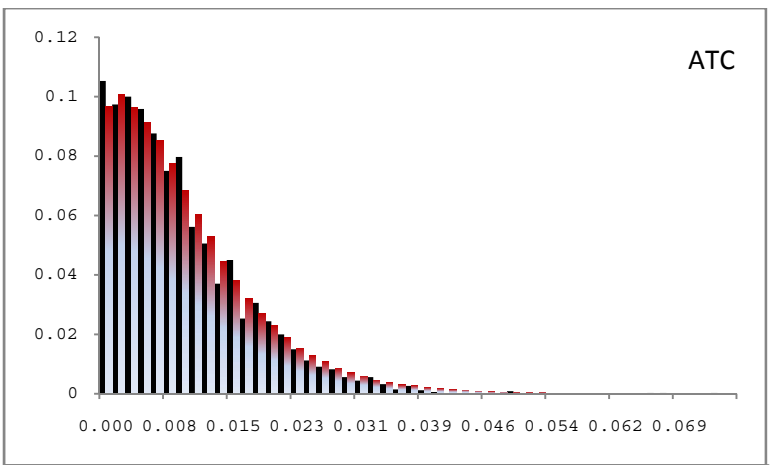
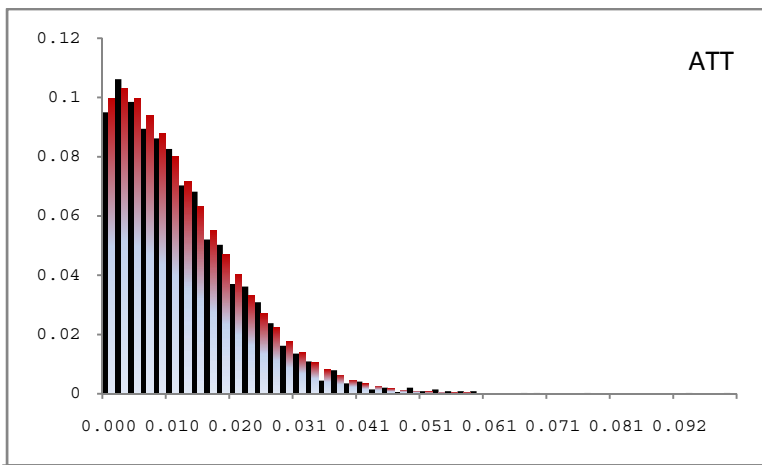


Figure S1 Continued

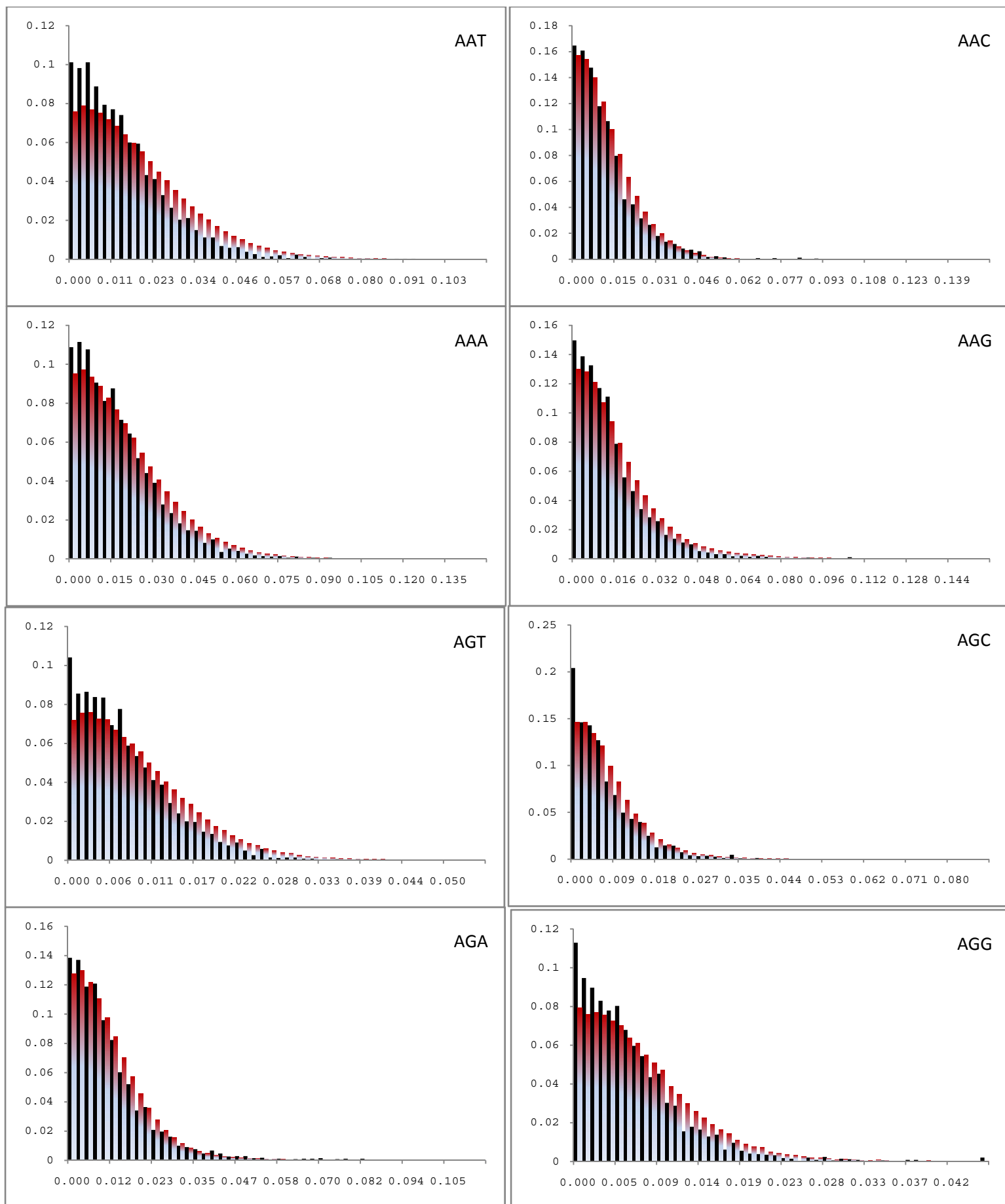


Figure S1 Continued

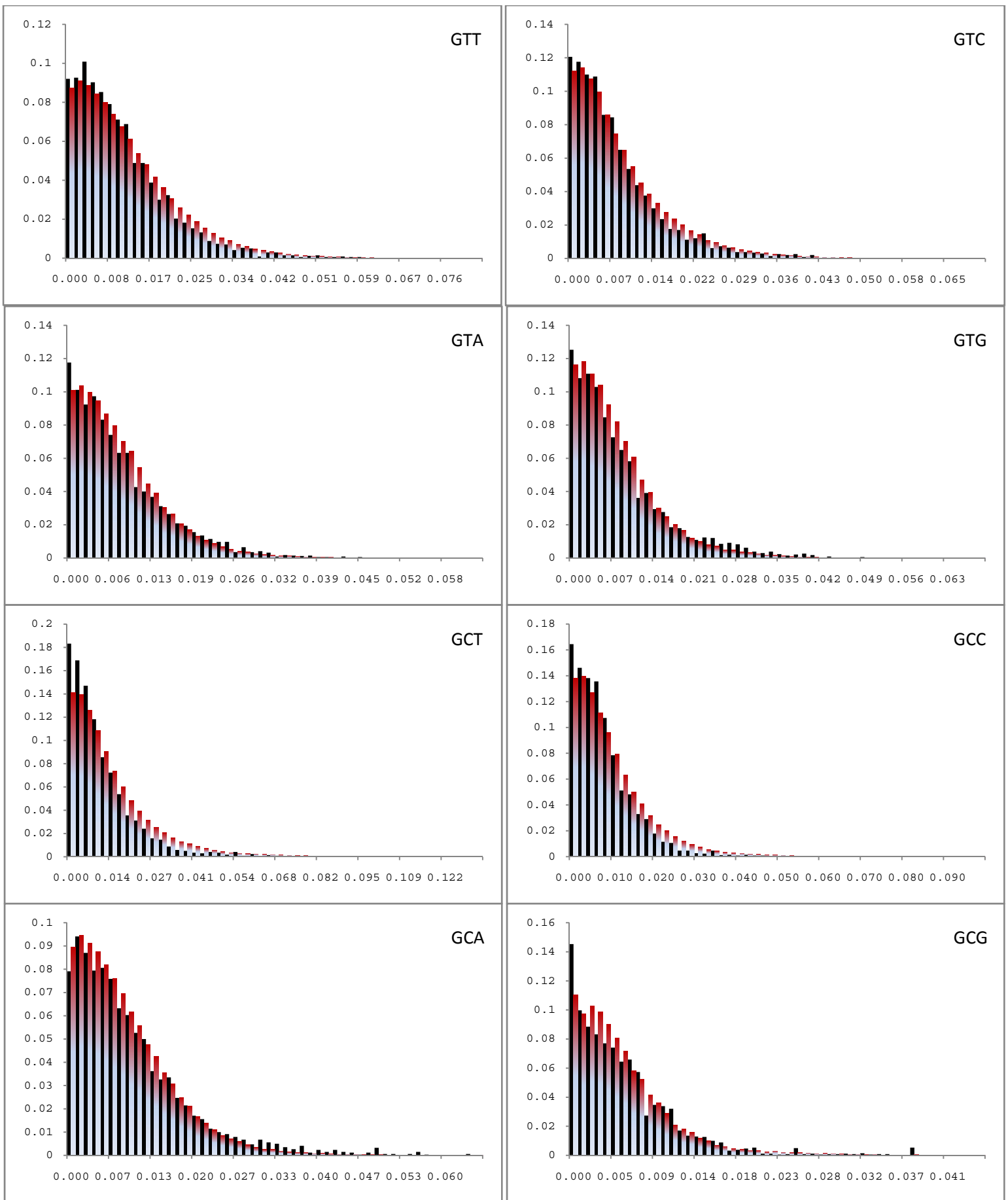


Figure S1 Continued

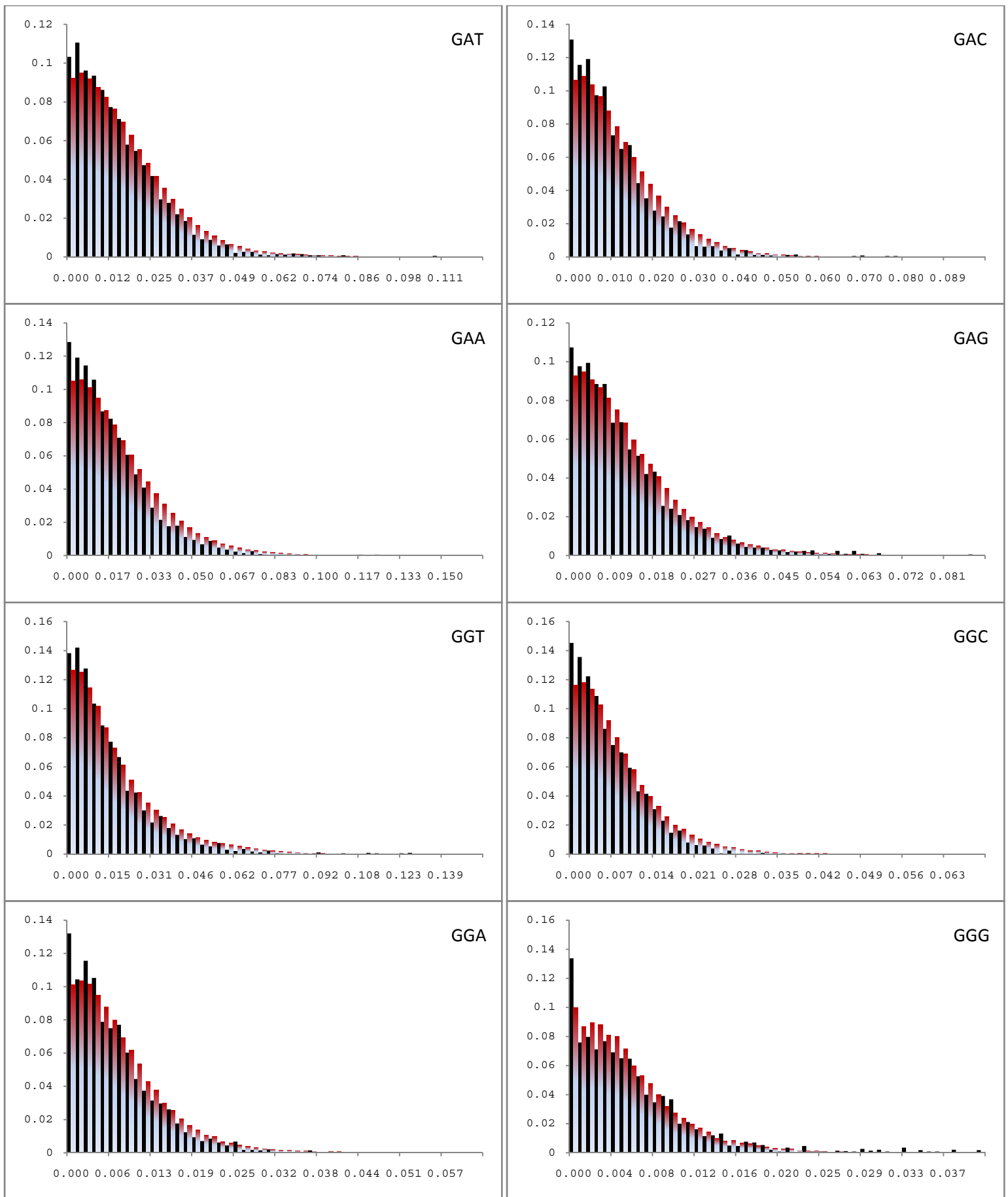


Figure S1 Continued